

TRAVERSE STATION SUMMARY

STATION NO. : **4004.17** (FORMER NO. : **TV155.19**)

LOCALITY : **TSING YI**

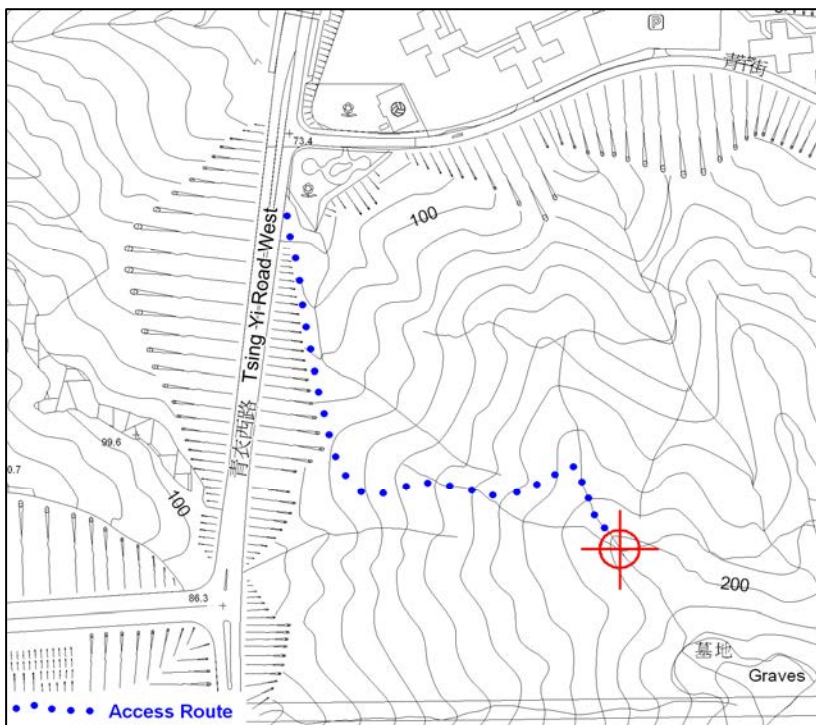
SURVEY SHEET NO. : **10-NE-4D**

HK 80 DATUM	HK 1980 GRID COORDINATES : N = 822 983.602 m, E = 828 260.141 m, Class : H3 Ht = _____ m above HKPD and measured to the top of mark, Class : _____	
WGS 84 DATUM	GEOGRAPHICAL COORDINATES : Lat = _____ N, Long = _____ E, Class : _____ Ht = _____ m above Ellipsoid and measured to the top of mark, Class : _____ Reference Frame = _____	

STATION PHOTO



LOCATION MAP (Scale 1:5000)



REMARKS:

Type of Mark : Type B Beacon

It takes about 15 minutes from the concrete steps at Tsing Yi Road West to beacon.