

SATELLITE POSITIONING REFERENCE STATION SUMMARY

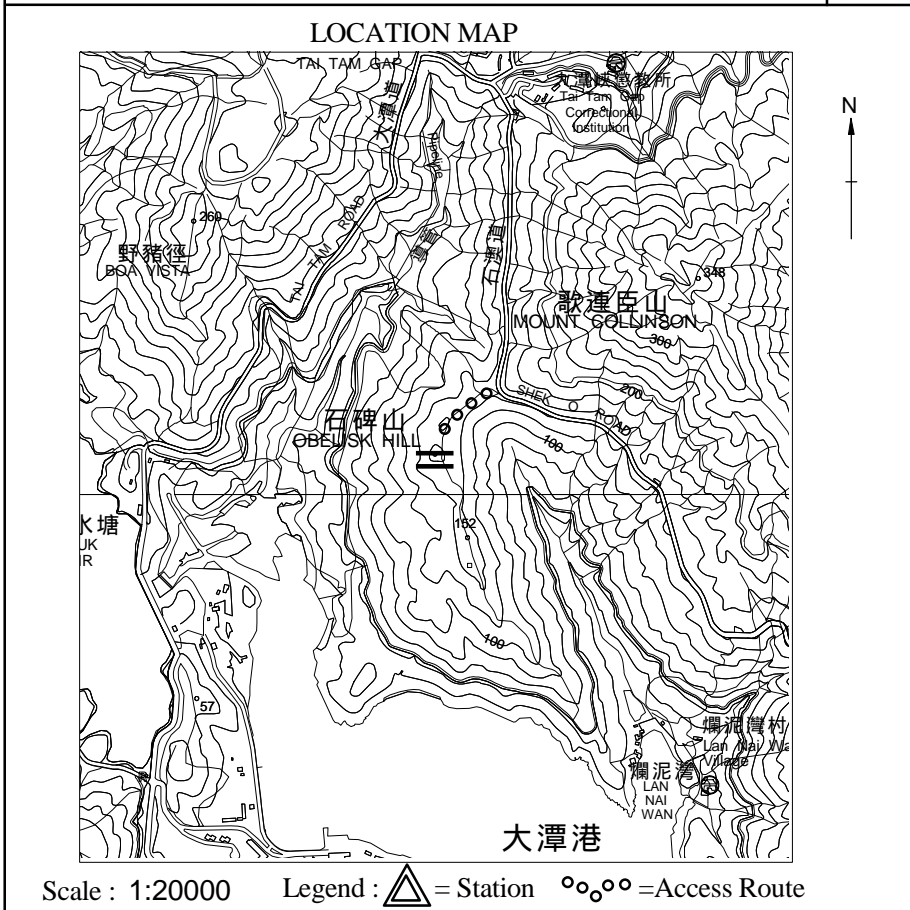
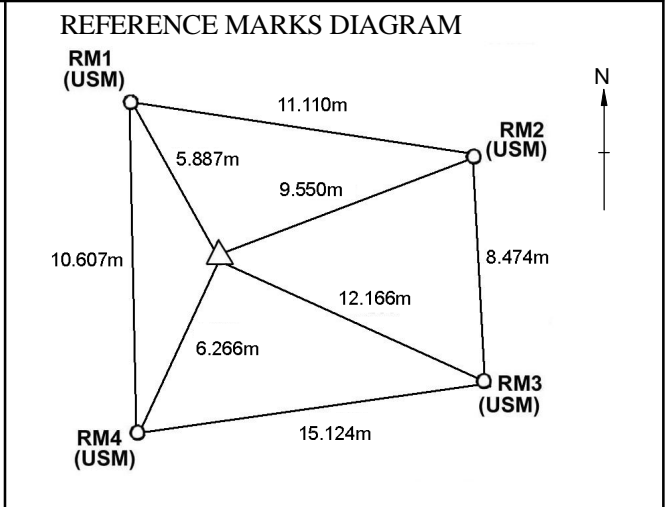
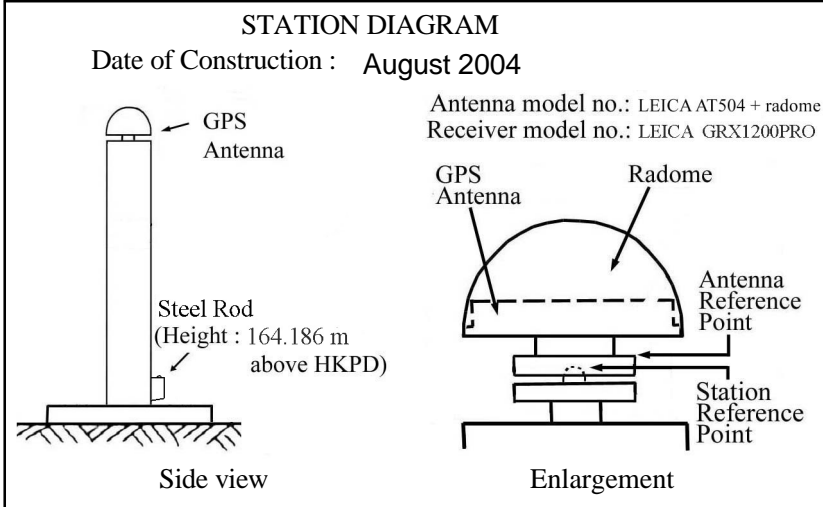
STATION NO. : HKOH (FORMER NO. : _____)

ACCURACY CLASS : _____

TRIG. NAME : OBELISK HILL SATELLITE POSITIONING REFERENCE STATION

LOCALITY : OBELISK HILL, SHEK O

HK 80 DATUM	<p>HK 1980 GRID COORDINATES : N = <u>812 103.834</u>m , E = <u>841 595.061</u> m , Ht = <u>168.689</u> m (1) <i>Note (1) : Height is above the HKPD and measured to the top of Station Reference Point.</i></p> <p>LEVEL ACCURACY : _____</p> <p>SCALE FACTOR : + <u>0.3</u> ppm to measured distance to give Grid Distance</p> <p>GRID CONVERGENCE : + <u>1' 4.8"</u> to Grid Bearings to give Azimuth</p>
WGS 84 DATUM	<p>GEOGRAPHICAL COORDINATES : Lat <u>22° 14'51.67380"</u> N, Long <u>114° 13'42.78789"</u> E, Ht=<u>166.418</u> m (2) <i>Note (2) : Height is above the WGS 84 Ellipsoid and measured to the top of Station Reference Point.</i></p> <p>GPS ACCURACY : _____</p> <p>REFERENCE FRAME : ITRF96</p> <p>UTM GRID COORDINATES : <u>2 462 860</u> mN <u>214 348</u> mE</p> <p>UTM GRID REFERENCE : <u>50Q KK 143 629</u></p>



GRID BEARINGS TO ADJACENT TRIGS.

LAST MAINTENANCE RECORD :

Last visit on : 14/12/2004

REMARKS :

- 1) The Station Reference Point (horizontal & vertical) is the top of the nipple of the lower antenna mount.
- 2) The height from the Station Reference Point to the Antenna Reference Point (bottom of antenna) is 0.008m.
- 3) The HK 1980 grid coordinates of this station are transformed from GPS surveyed geodetic coordinates.