

# TRAVERSE STATION SUMMARY

STATION NO. : 1015.TS13 (FORMER NO. : \_\_\_\_\_)

LOCALITY : MOUNT BUTLER

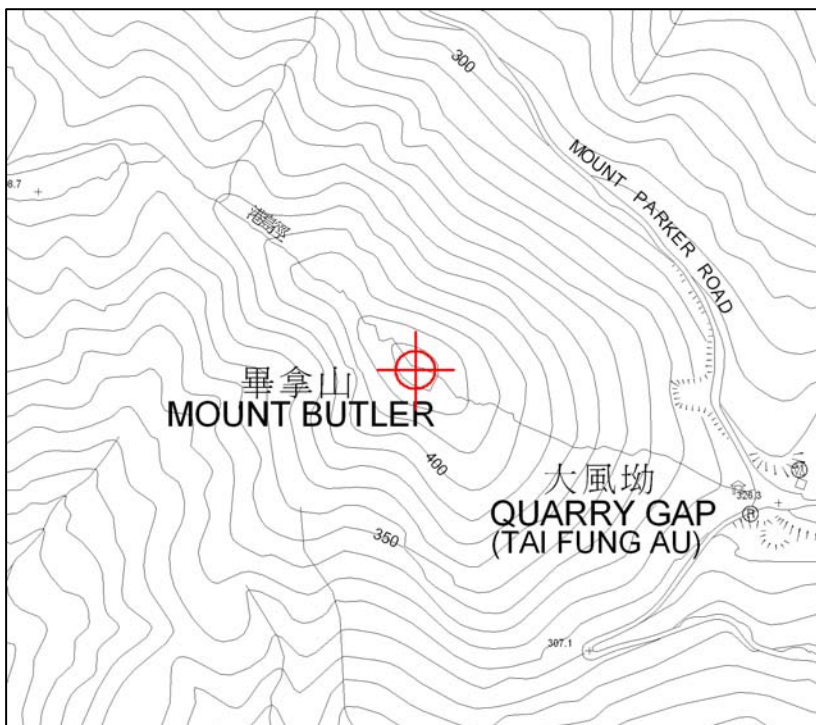
SURVEY SHEET NO. : 11-SE-17B

<b>HK 80 DATUM</b>	<b>HK 1980 GRID COORDINATES :</b> N = <u>814 311.922</u> m, E = <u>839 797.064</u> m, Class : <u>H3</u> Ht = _____ m above HKPD and measured to the top of mark, Class : _____	
<b>WGS 84 DATUM</b>	<b>GEOGRAPHICAL COORDINATES :</b> Lat = _____ N, Long = _____ E, Class : _____ Ht = _____ m above Ellipsoid and measured to the top of mark, Class : _____ Reference Frame = _____	

## STATION PHOTO



## LOCATION MAP (Scale 1:5000)



## REMARKS:

**Type of Mark :**  
**Type A Beacon**

**All measurements shown are in horizontal distance unless otherwise specified.**