

TRAVERSE STATION SUMMARY

STATION NO. : 1114.23 (FORMER NO. : 1111.07) CLASS : _____

LOCALITY : LANTAU (NGONG SHUEN AU) SURVEY SHEET NO. : 10-NW-15A

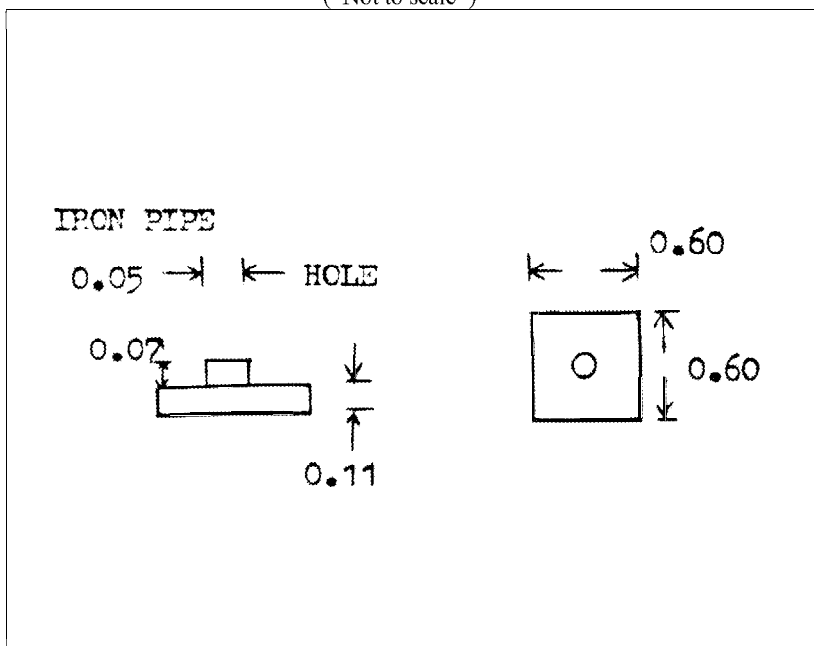
HK 80 DATUM	<p>HK 1980 GRID COORDINATES : N = <u>821 146.336</u> m , E = <u>821 168.387</u> m , Ht = _____ m ⁽¹⁾ (By Survey) Note (1): Height is above the HKPD and measured to the top of mark. LEVEL ACCURACY :</p>
WGS 84 DATUM	<p>GEOGRAPHICAL COORDINATES : Lat _____ , Long _____ , Ht = _____ m ⁽²⁾ (By Transformation) Note (2): Height is above the WGS 84 Ellipsoid and measured to the top of mark. GPS ACCURACY : REFERENCE FRAME :</p>

STATION SKETCH

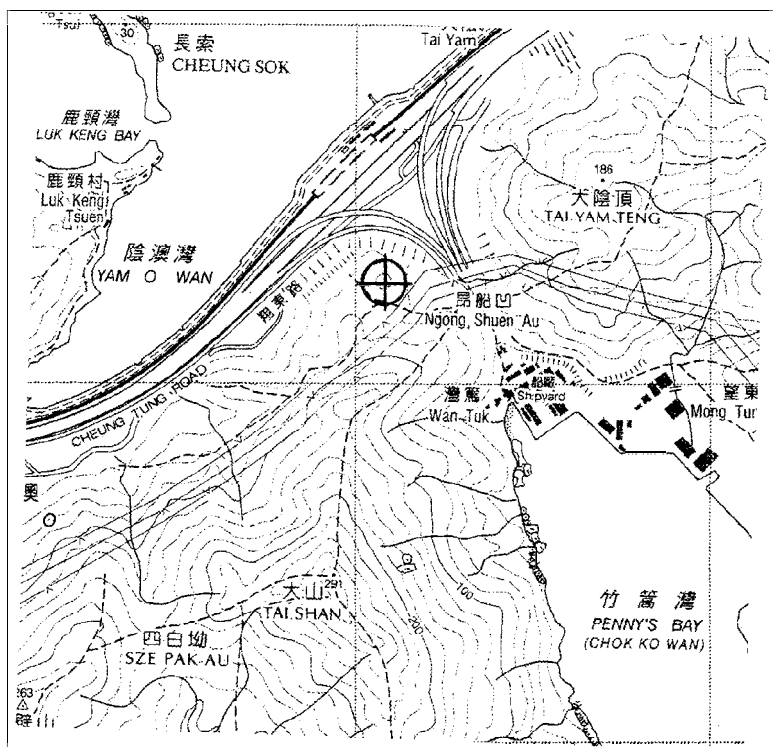
(Not to scale)

TYPE OF MARK:

BEACON B



LOCATION MAP



Scale : 1 / 20 000

Legend : = Station

REMARKS:

BEACON