

# TRIGONOMETRICAL STATION SUMMARY

STATION NO. : **238** (FORMER NO. : **231.1**)

SURVEY SHEET NO. : **10-SW-16A**

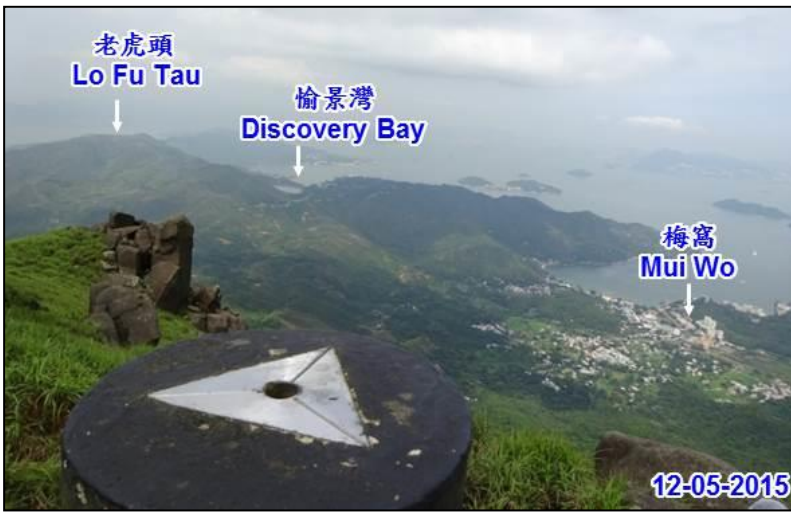
TRIG. NAME : **LIN FA SHAN**

LOCALITY : **LIN FA SHAN, LANTAU**

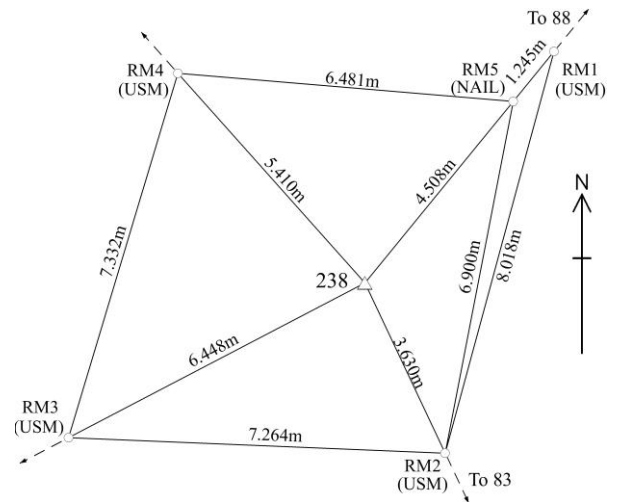
<b>HK 80 DATUM</b>	HK 1980 GRID COORDINATES : N = <b>814 138.329</b> m, E = <b>815 018.924</b> m,	Class : <b>H2</b>
	Ht = <b>767.52</b> m above HKPD and measured to the top of mark,	Class : <b>V4</b>
	SCALE FACTOR : <b>+ 5.8</b> ppm to measured distance to give Grid Distance	
	GRID CONVERGENCE : <b>- 04' 46.9"</b> to Grid Bearings to give Azimuth	

<b>WGS 84 DATUM</b>	GEOGRAPHICAL COORDINATES : Lat = <b>22° 15' 57.37480"</b> N, Long = <b>113° 58' 14.55585"</b> E,	Class : <b>GH3</b>
	Ht = <b>764.148</b> m above Ellipsoid and measured to the top of mark,	Class : <b>GV3</b>
	Reference Frame = <b>ITRF96</b>	
	UTM GRID COORDINATES : <b>2 465 272</b> mN, <b>806 162</b> mE	
	UTM GRID REFERENCE : <b>49Q HE 061 652</b>	

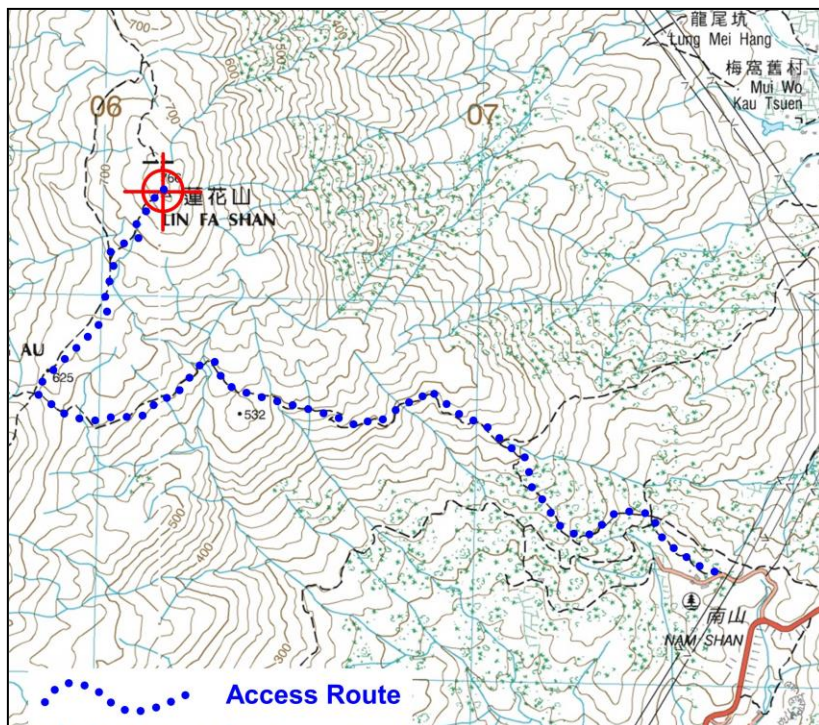
STATION PHOTO



REFERENCE MARKS DIAGRAM



LOCATION MAP (Scale 1:20000)



GRID BEARINGS TO ADJACENT TRIGS.

<b>88</b>	<b>39° 15' 53"</b>
<b>83</b>	<b>154° 49' 43"</b>
<b>256</b>	<b>242° 28' 09"</b>
<b>87</b>	<b>250° 31' 51"</b>

REMARKS:

Type of Mark :  
Type A Beacon