

TRAVERSE STATION SUMMARY

STATION NO. : 4035.11 (FORMER NO. : TV186.01)

CLASS : _____

LOCALITY : BUFFALO HILL

SURVEY SHEET NO. : 7-SE-19A

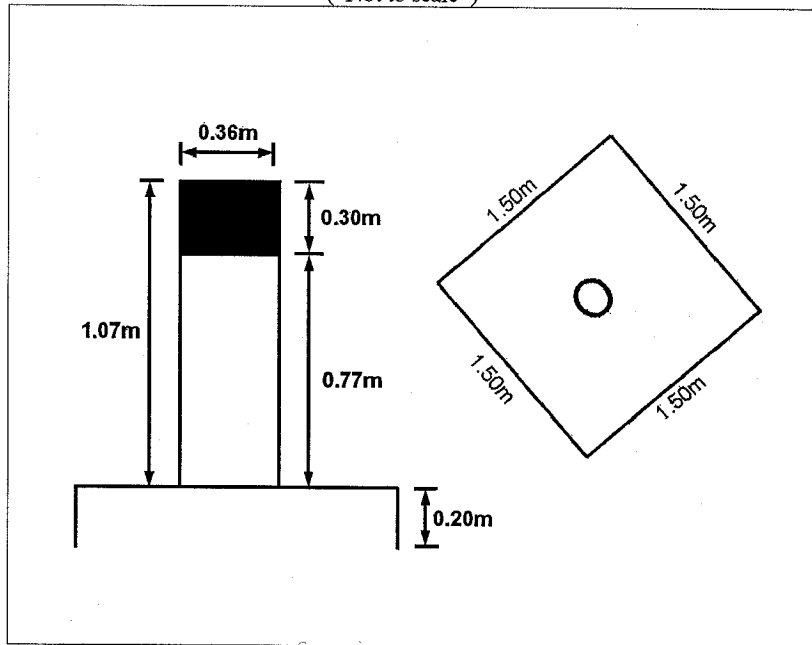
<p>HK 80 DATUM</p>	<p>HK 1980 GRID COORDINATES : N = <u>826 154.146</u> m , E = <u>842 185.739</u> m , Ht = <u>607.5</u>m ⁽¹⁾ (By Survey) : Note (1): Height is above the HKPD and measured to the top of mark. LEVEL ACCURACY :</p>
<p>WGS 84 DATUM</p>	<p>GEOGRAPHICAL COORDINATES : Lat _____ , Long _____ , Ht = _____ m ⁽²⁾ (By Transformation) : Note (2): Height is above the WGS 84 Ellipsoid and measured to the top of mark. GPS ACCURACY : REFERENCE FRAME :</p>

STATION SKETCH

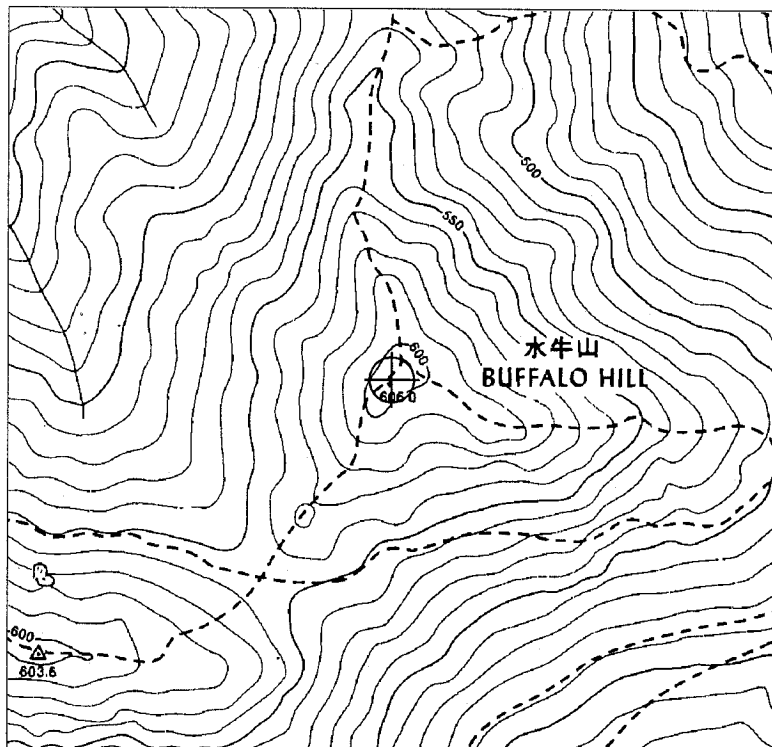
(Not to scale)

TYPE OF MARK:

BEACON A



LOCATION MAP



Scale : 1 / 5 000

Legend : = Station

REMARKS:

Drive to the Gibwell Camp along the Fei Ngo Shan Road via the Clear Water Bay Road and stop at the entrance of the Maclehose Trail. Walk along Maclehose Trail towards Ngong Ping. Walk up to Buffalo Hill at Fu Yung Pit. It takes about 90 minutes walk.