

TRIGONOMETRICAL STATION SUMMARY

STATION NO. : **542** (FORMER NO. : _____)

SURVEY SHEET NO. : **3-SE-6A**

TRIG. NAME : **KWAI TAU LENG**

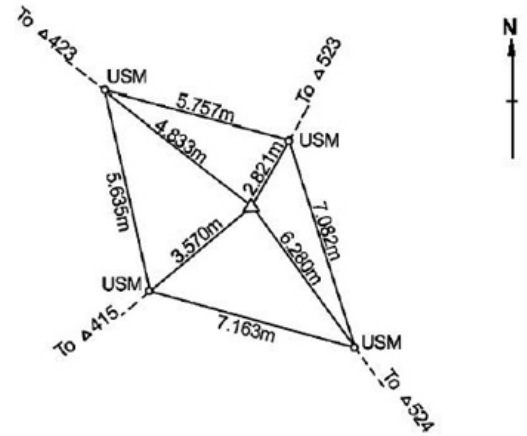
LOCALITY : **KWAI TAU LENG**

HK 80 DATUM	<p>HK 1980 GRID COORDINATES : N = 840 738.119 m, E = 838 032.085 m, Class : N.A. Transformed from WGS84 (ITRF96) Ht = 486.9 m above HKPD and measured to the top of mark, Class : V5</p> <p>SCALE FACTOR : + 0.0 ppm to measured distance to give Grid Distance</p> <p>GRID CONVERGENCE : + 00' 17.9" to Grid Bearings to give Azimuth</p>
WGS 84 DATUM	<p>GEOGRAPHICAL COORDINATES : Lat = 22° 30' 22.59836" N, Long = 114° 11' 38.46944" E, Class : GH3 Ht = 483.858 m above Ellipsoid and measured to the top of mark, Class : GV3</p> <p>Reference Frame = ITRF96</p> <p>UTM GRID COORDINATES : 2 491 573 mN, 211 321 mE</p> <p>UTM GRID REFERENCE : 50Q KK 113 915</p>

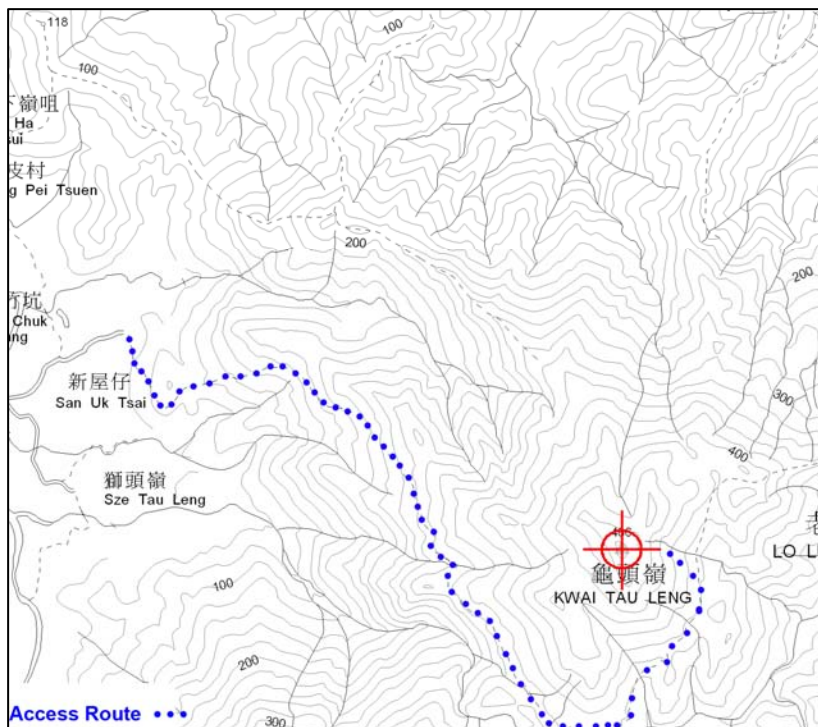
STATION PHOTO



REFERENCE MARKS DIAGRAM



LOCATION MAP (Scale 1:20000)



GRID BEARINGS TO ADJACENT TRIGS.

523	48° 31' 33"
524	143° 01' 12"
415	231° 53' 20"
423	314° 40' 38"

REMARKS:

Type of Mark :
Type A Beacon (CP)

Date of Construction : Jul 2004

1) Drive along the track from San Uk Tsai and walk 2 hours to the Trig.Station.

2) Ring-headed screws were installed.

3) The HK 1980 Grid Coordinates of this station were transformed from GPS surveyed geodetic coordinates.