

# TRIGONOMETRICAL STATION SUMMARY

STATION NO. : **627** (FORMER NO. : **D497** )

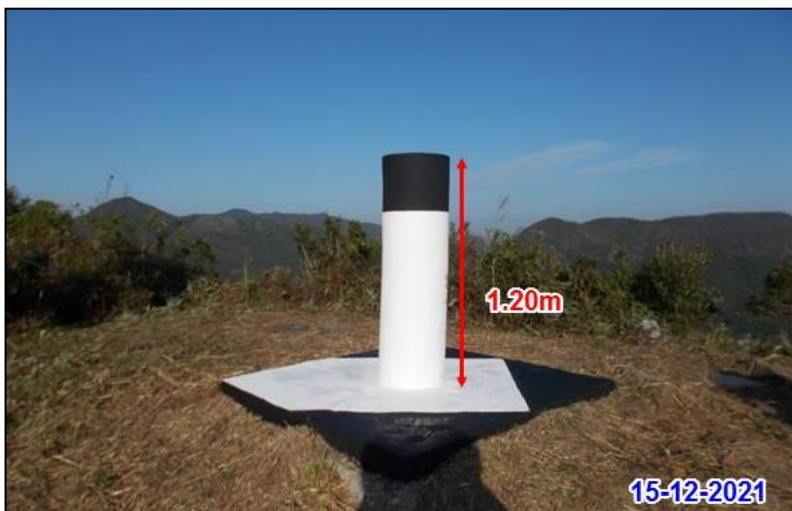
SURVEY SHEET NO. : **8-SW-8A**

TRIG. NAME : **WONG MO YING**

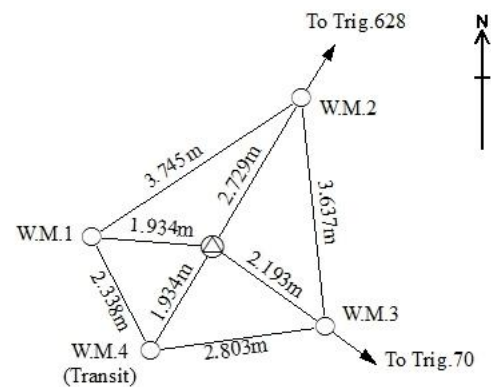
LOCALITY : **TAI MONG TSAI**

<b>HK 80 DATUM</b>	HK 1980 GRID COORDINATES : N = <b>828 771.961</b> m, E = <b>848 378.258</b> m, Class : <b>H2</b>
	Ht = <b>241.5</b> m above HKPD and measured to the top of mark, Class : <b>V5</b>
	SCALE FACTOR : <b>+ 1.7</b> ppm to measured distance to give Grid Distance
	GRID CONVERGENCE : <b>+ 02' 35.7"</b> to Grid Bearings to give Azimuth
<b>WGS 84 DATUM</b>	GEOGRAPHICAL COORDINATES : Lat = _____ N, Long = _____ E, Class : _____
	Ht = _____ m above Ellipsoid and measured to the top of mark, Class : _____
	Reference Frame = _____
	UTM GRID COORDINATES : <b>2 479 408</b> mN, <b>221 447</b> mE
	UTM GRID REFERENCE : <b>50Q KK 214 794</b>

STATION PHOTO



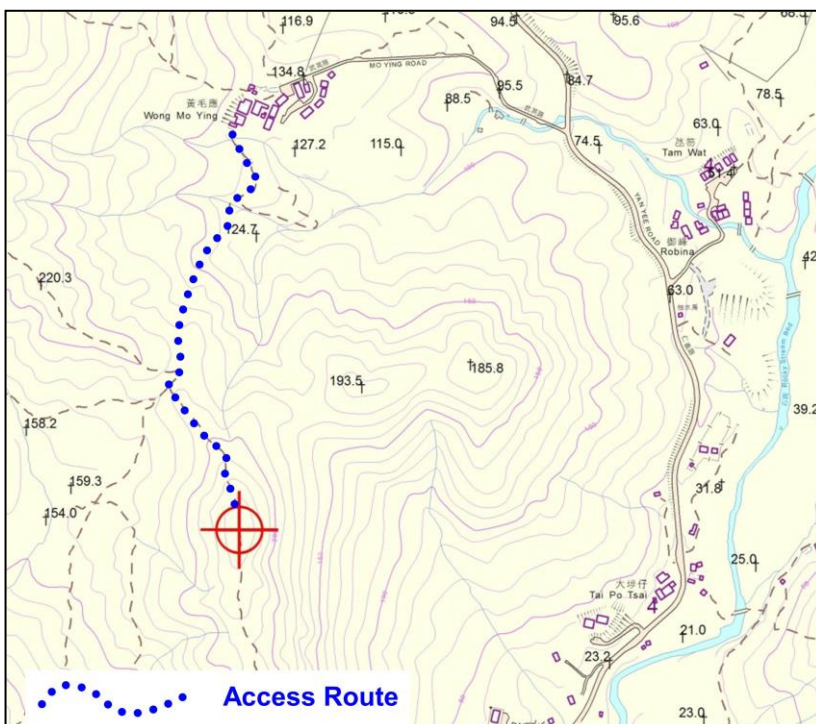
REFERENCE MARKS DIAGRAM



All witness marks are USM in concrete base.

Not To Scale

LOCATION MAP (Scale 1:10000)



GRID BEARINGS TO ADJACENT TRIGS.

<b>621.1</b>	<b>274° 19' 12"</b>
<b>628</b>	<b>31° 04' 54"</b>
<b>626</b>	<b>87° 42' 52"</b>

## REMARKS:

Date of Construction : Apr 1976

Type of Mark :

Type A Beacon

Turn left to Yan Yee Road from Tai Mong Tsai Road, then turn left again to Mo Ying Road. Stop at the chapel in front of the village. Walk through village and follow footpath uphill. It takes about 25 mins. to the Trig.

The force centering plate was fixed in Oct, 2001.