



# **Use of GPS Signal Delay for Rainfall Nowcast in Hong Kong**

S. Y. Lau  
Hong Kong Observatory

# HKO Location-based service coming soon!!

香港特別行政區政府  
香港天文台

GOV-HK 香港政府一站通 简体版 ENGLISH 搜尋 網頁指南

主頁  
最新消息  
關於我們  
刊物及新聞公報  
公開資料  
公共服務  
公用表格  
電子服務  
招標公告(英文)  
相關網址  
天氣報告及預報  
香港分區天氣  
世界各地天氣信息  
熱帶氣旋  
航空氣象服務  
海洋氣象服務  
地震與海嘯  
授時與天文  
輻射監測、評價及防護  
氣候資料服務  
氣候變化  
其他天氣資料  
天文台勸導  
教育資源  
公眾的謠言  
世界氣象日  
世界氣象組織-官方城市預測  
世界氣象組織-全球惡劣天氣(英文)  
聯絡我們  
有聲網頁  
重要告示  
上一頁


## 我的天文台

**溫度**  
23.9 °C

**濕度**  
83 %

**風**  
東北  
27 公里/小時 32 公里/小時 陣風

2010 Jan 21 Thr 13:45H 1月21日 星期四

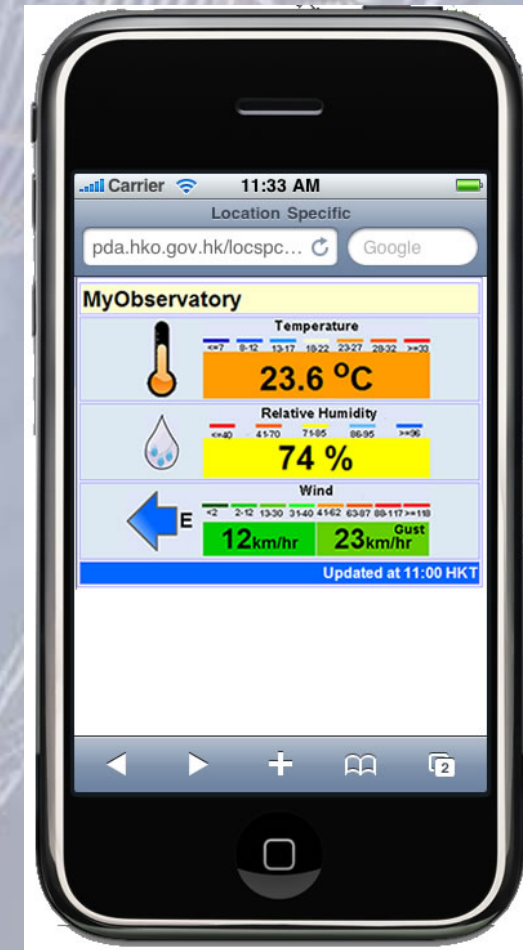


香港時間13時50分更新

Location-specific Lightning Alert Webpage

重新選擇地點

2003 © | 重要告示 | 私隱政策 最近修訂日期: <2010年1月19日>



# Use of GPS Signal Delay for Rainfall Nowcast in Hong Kong



# Measure upper air twice per day



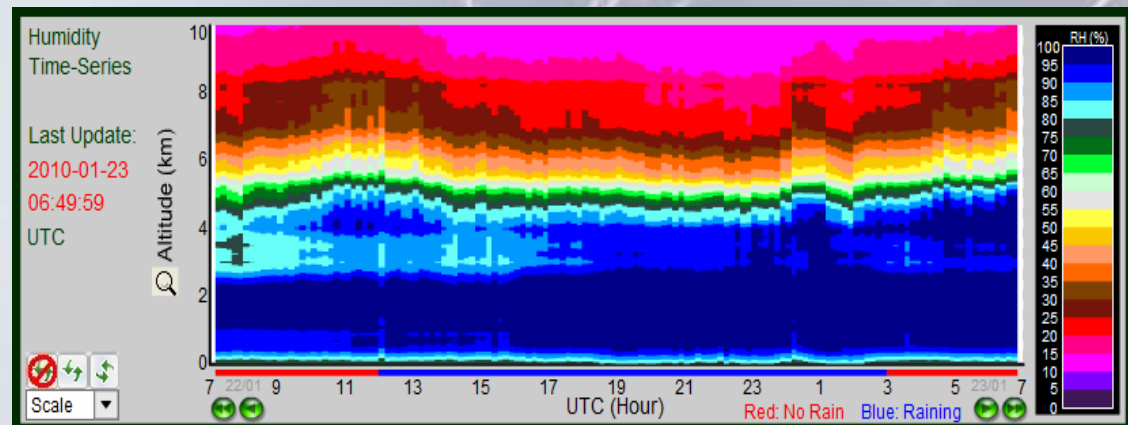


# Continuous measurement

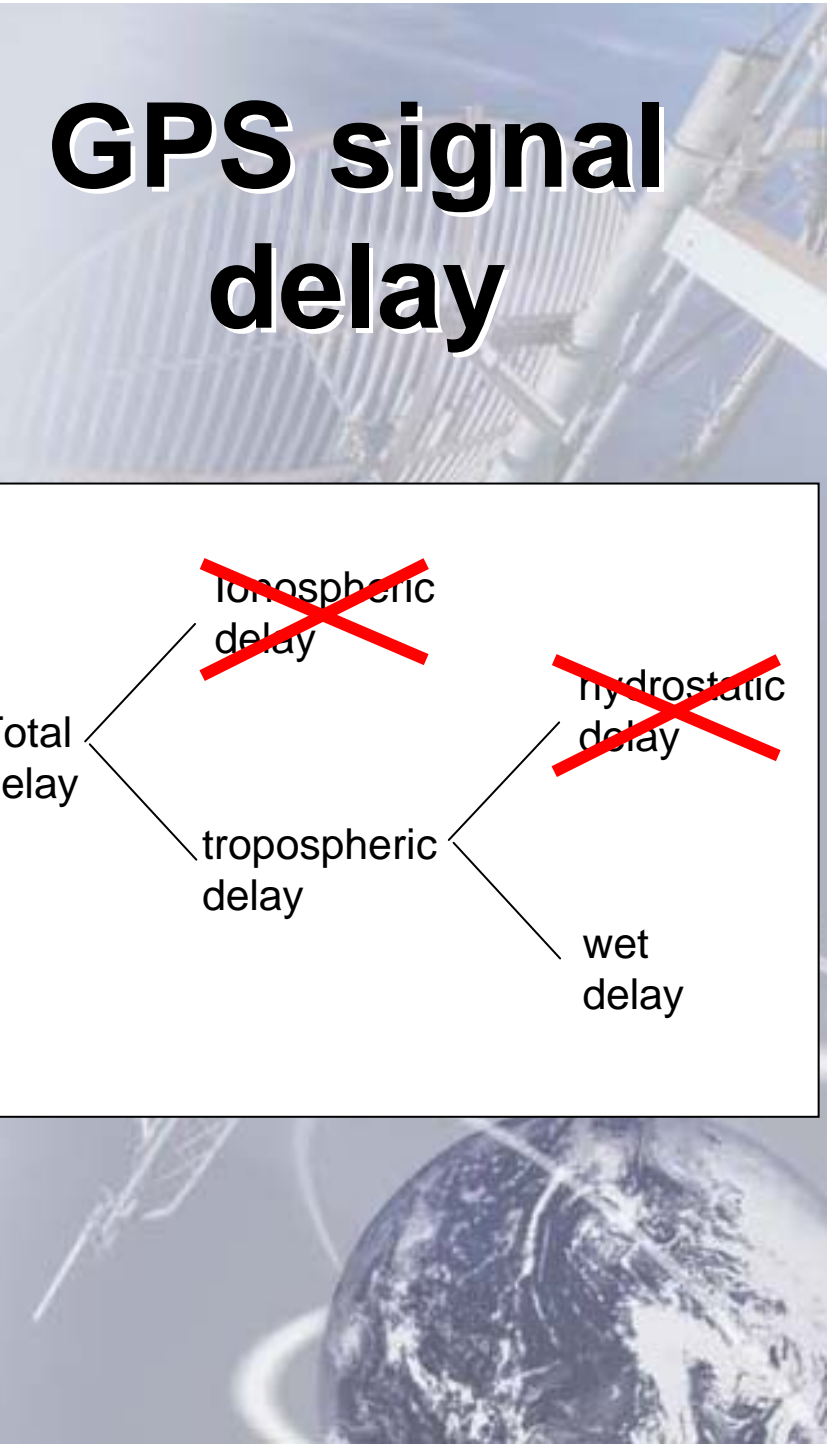
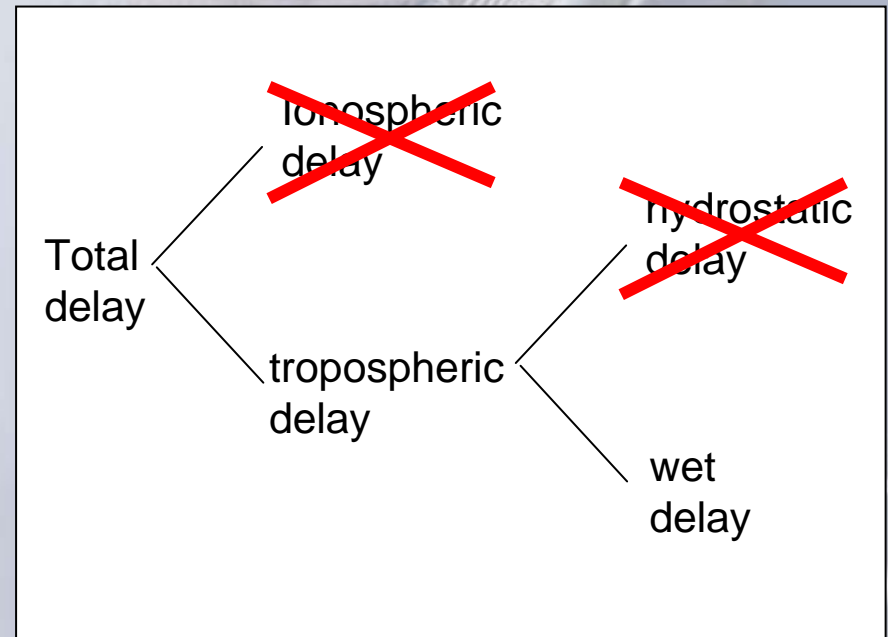
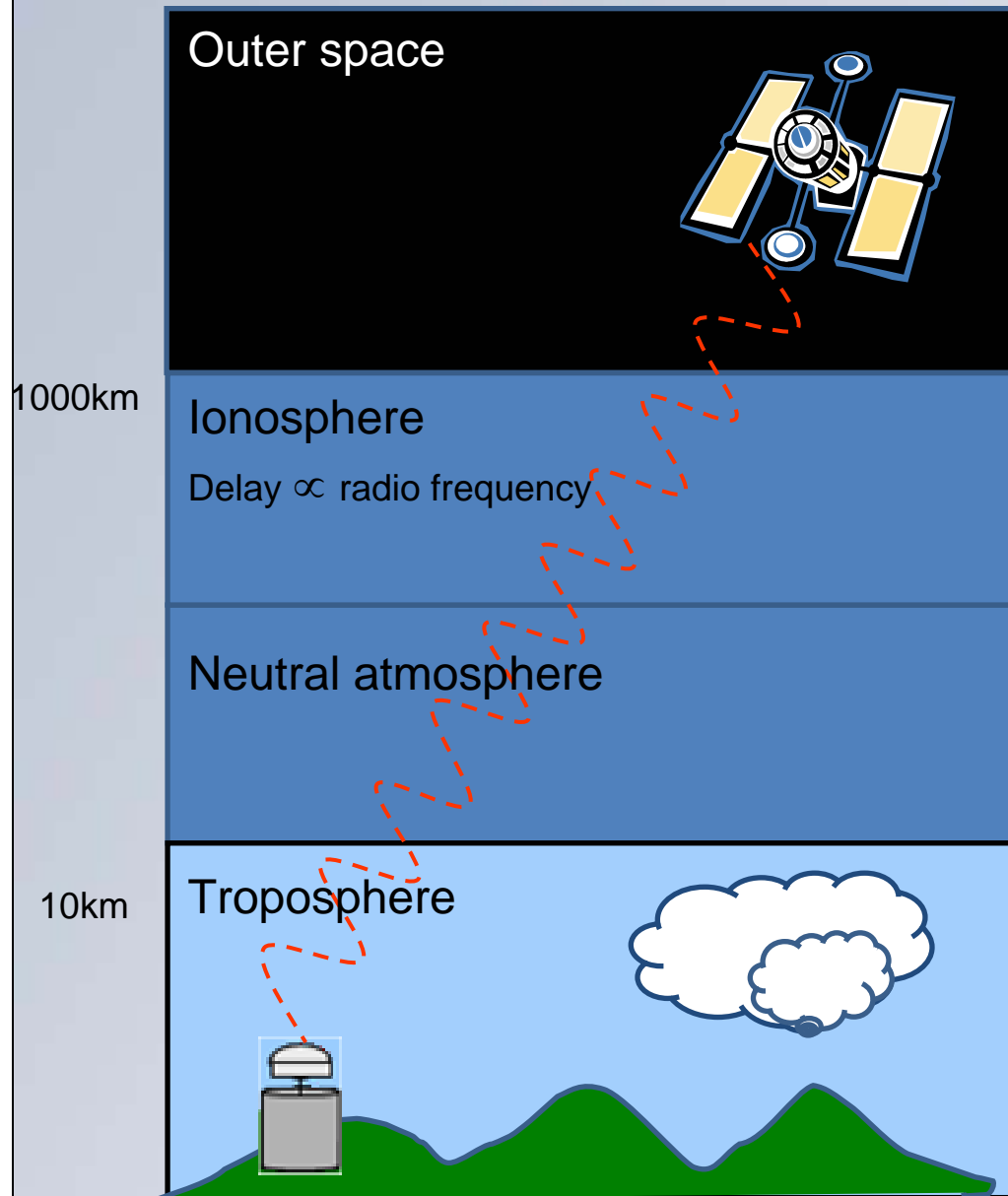
## Microwave radiometer



- Measures radiation intensity emitted by atmospheric water vapor, cloud liquid water and molecular oxygen to derive temperature & humidity profiles

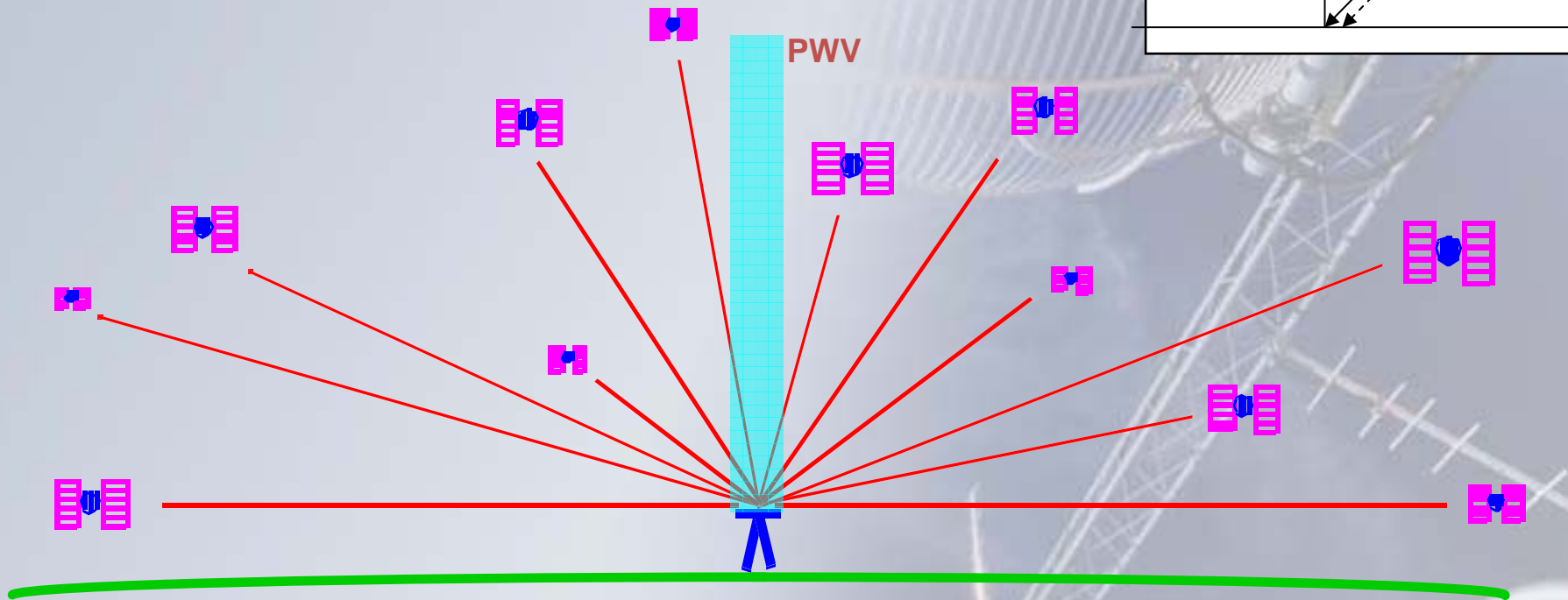
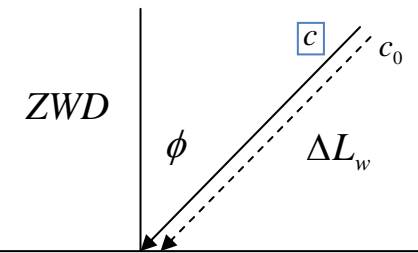


# GPS signal delay



# Precipitable Water Vapour Estimation

$$ZWD = \Delta L_w \csc \phi$$

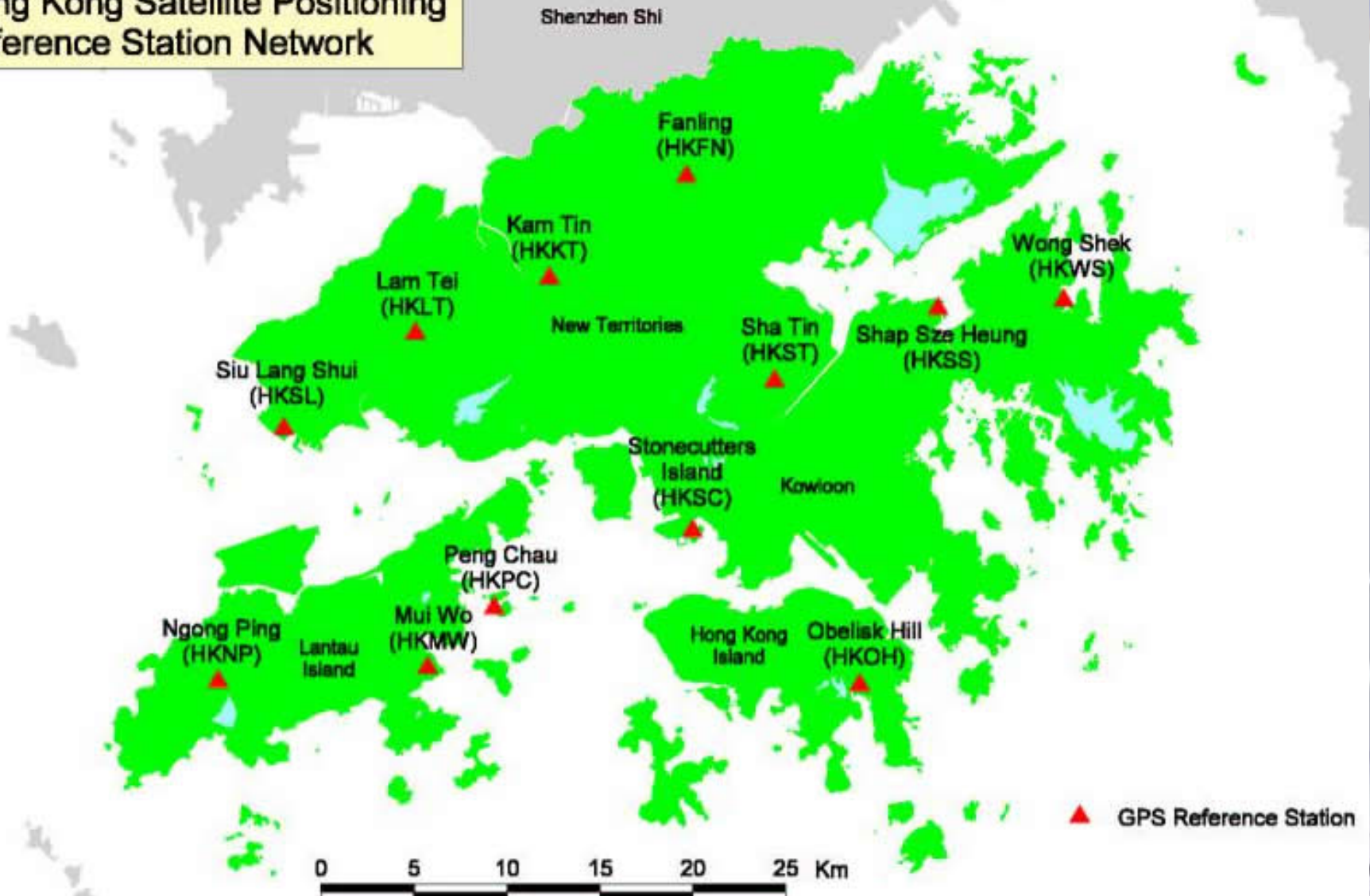


$$PWV = \int \rho_v dz = \Pi \times ZWD$$

$$\Pi = \frac{10^6}{\rho R_v \left[ \frac{k_3}{T_m} + k_2 - w k_1 \right]}$$

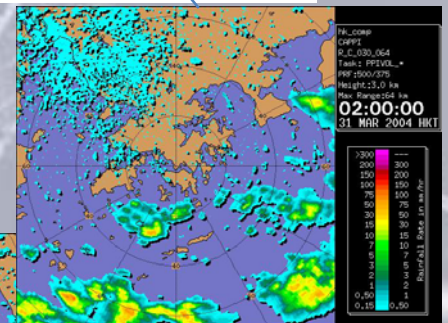
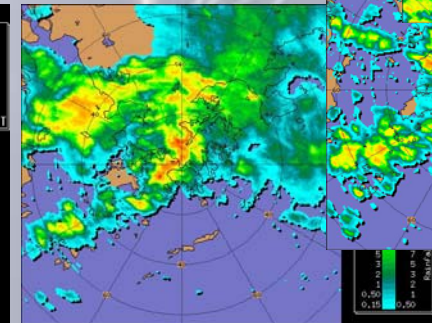
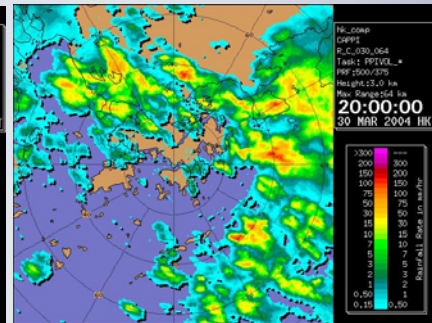
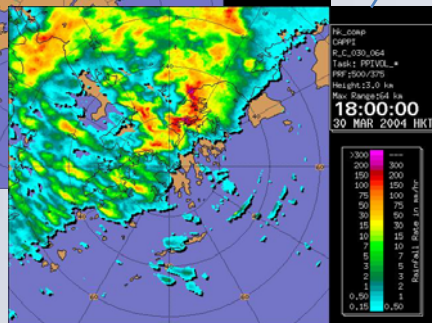
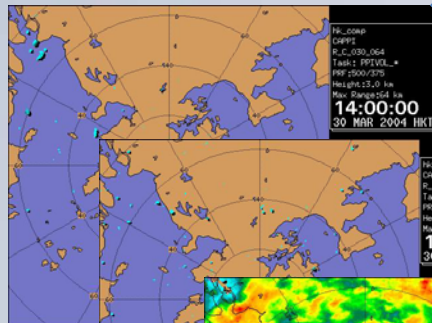
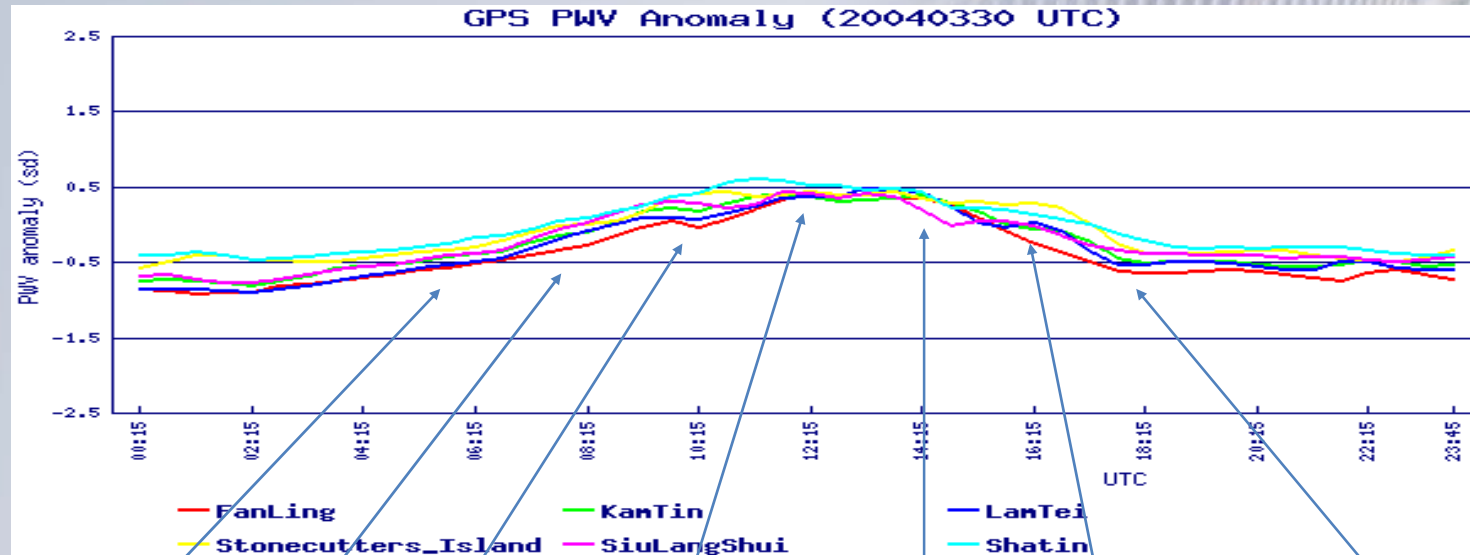
(Mapping function)

## Hong Kong Satellite Positioning Reference Station Network

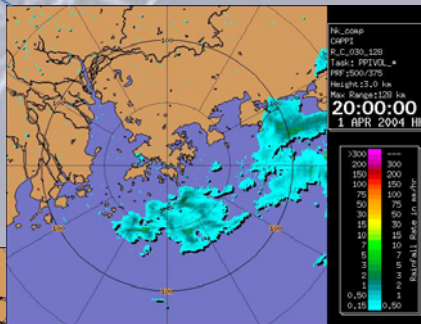
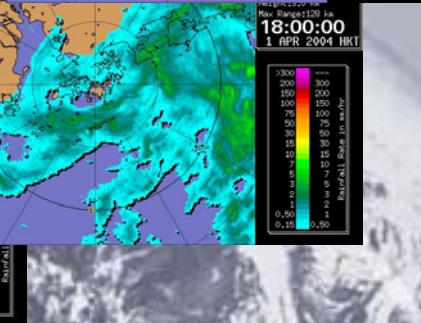
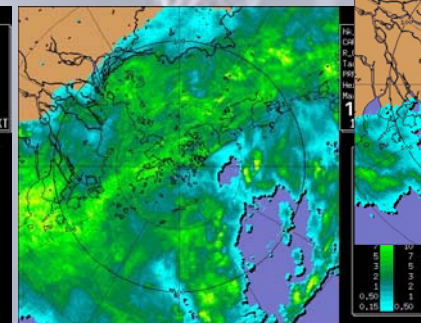
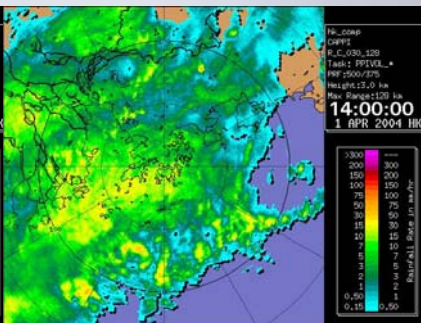
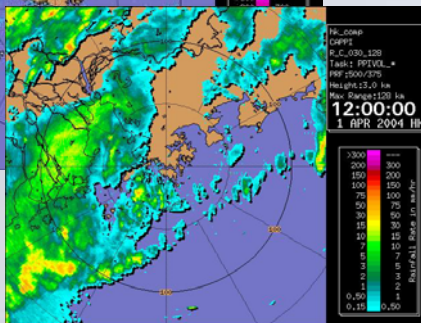
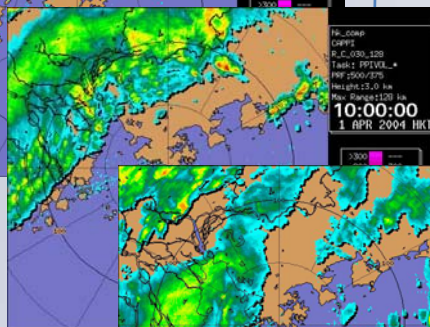
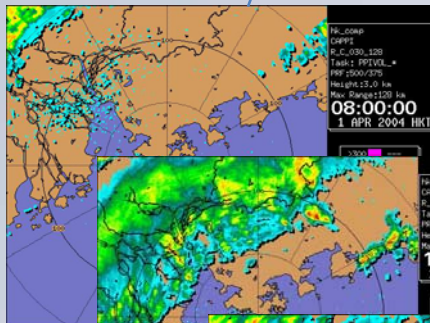
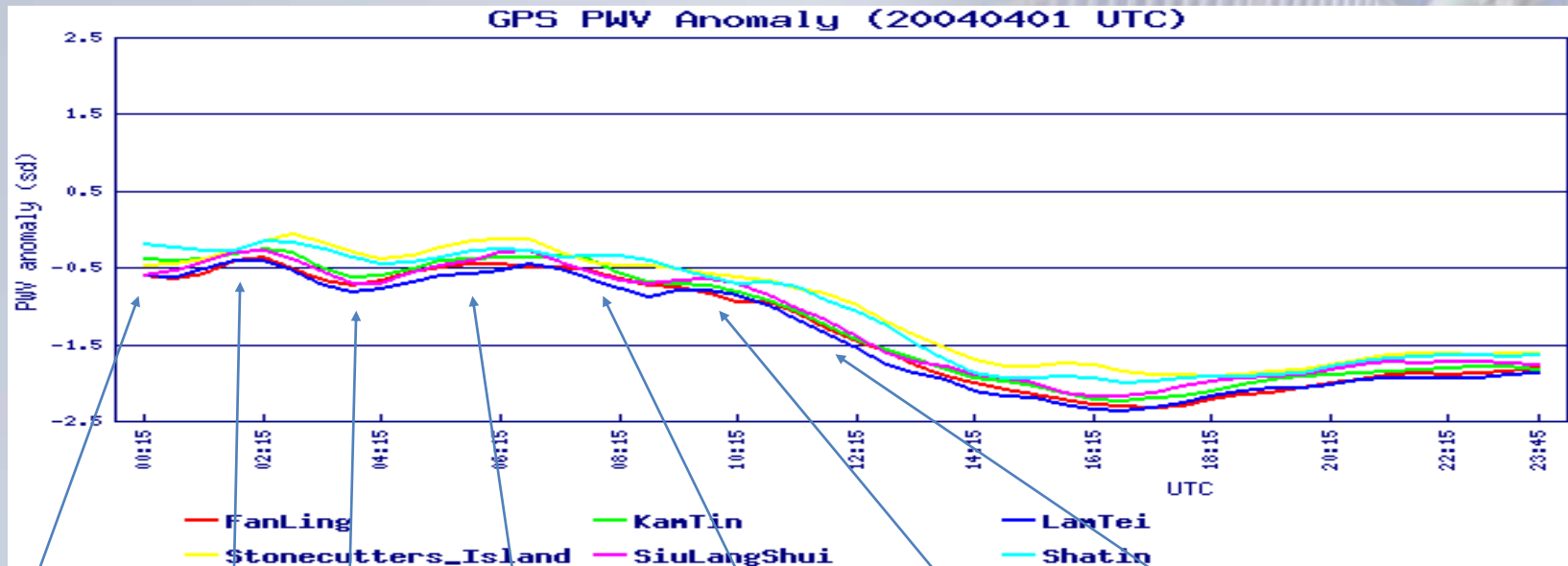




# Amber Rainstorm (30-31 Mar 04)

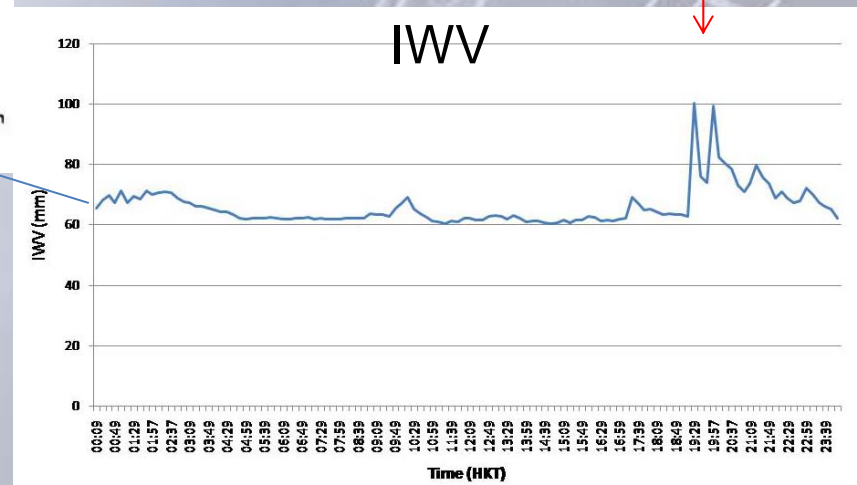
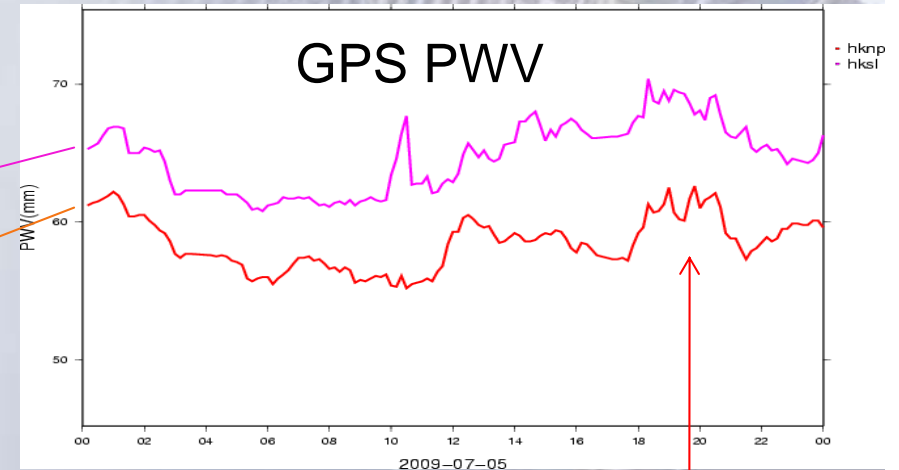
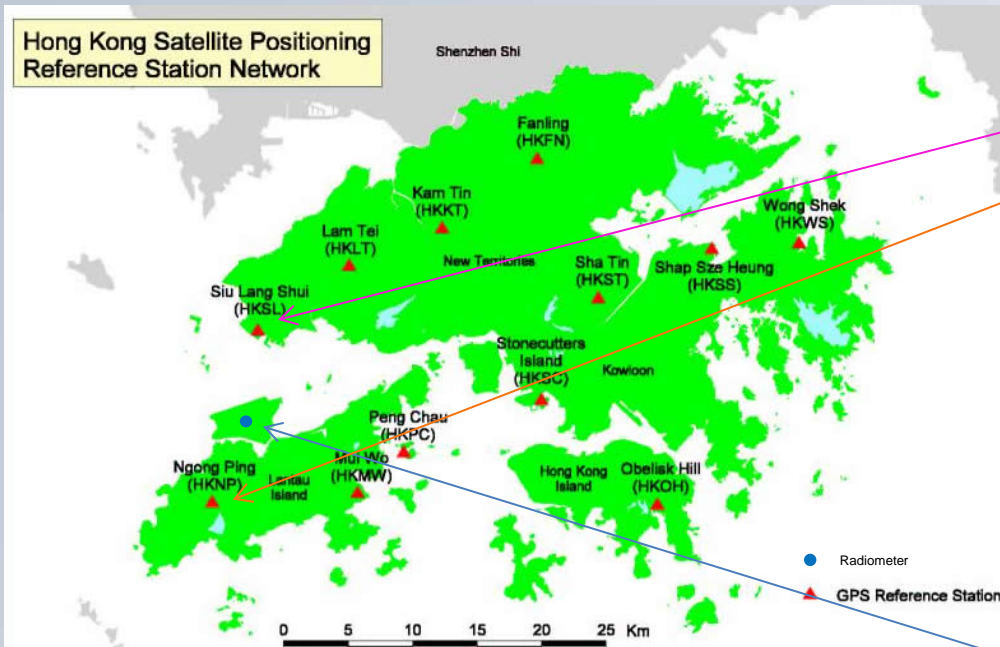


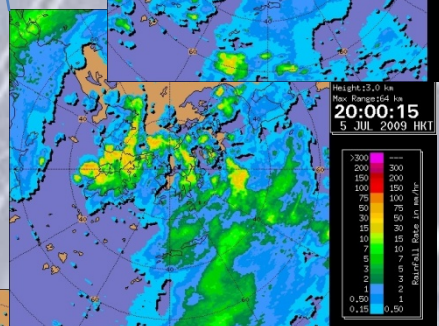
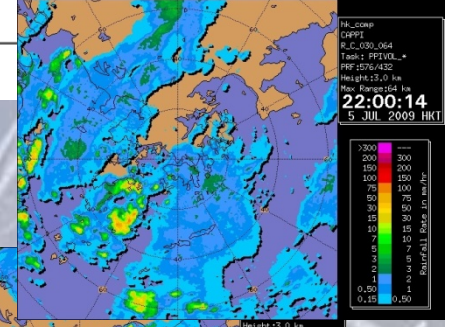
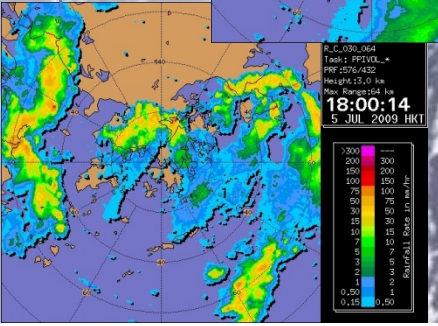
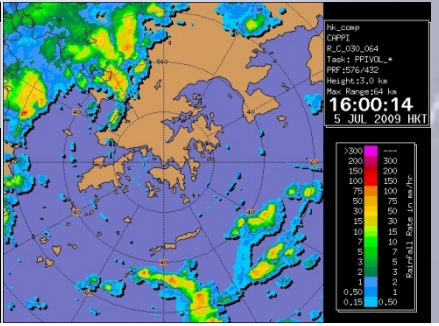
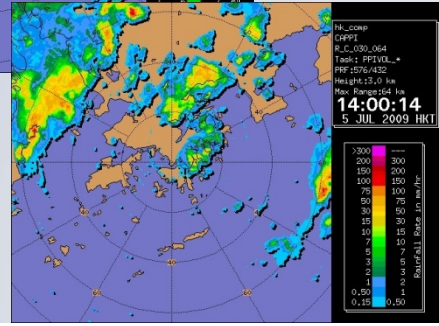
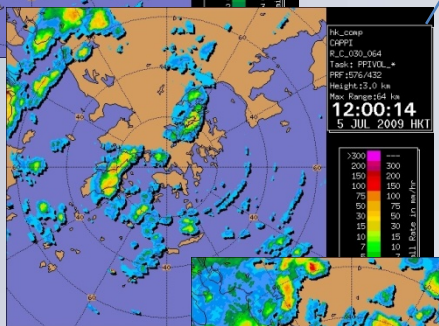
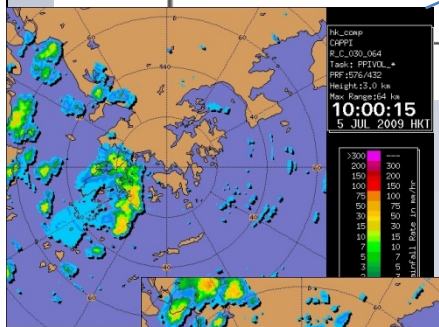
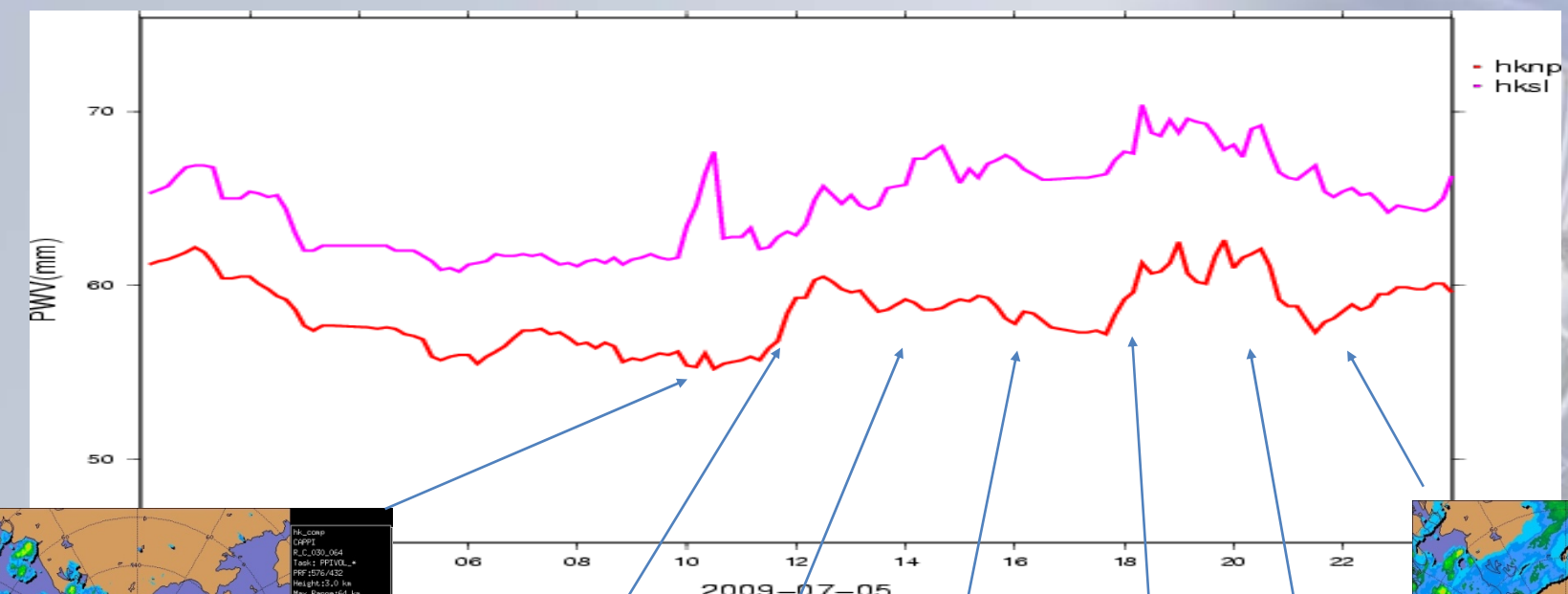
# Rainstorm? (1 Apr 04)





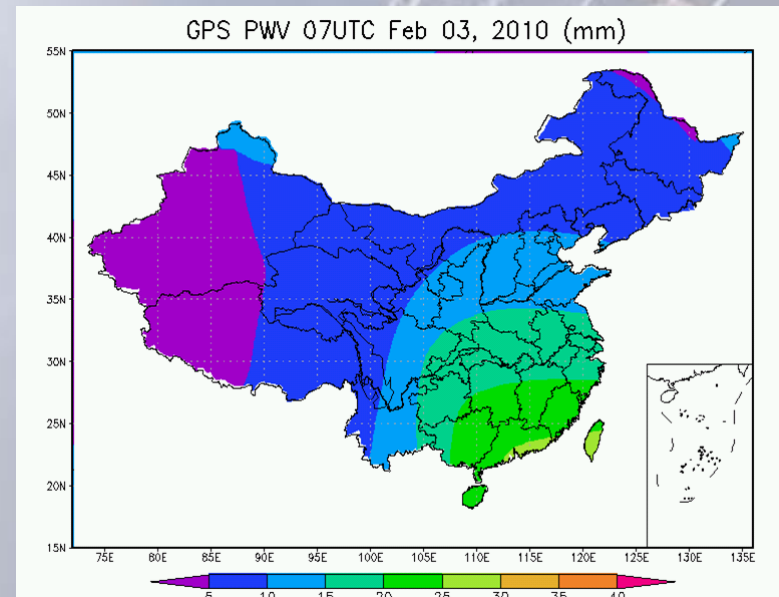
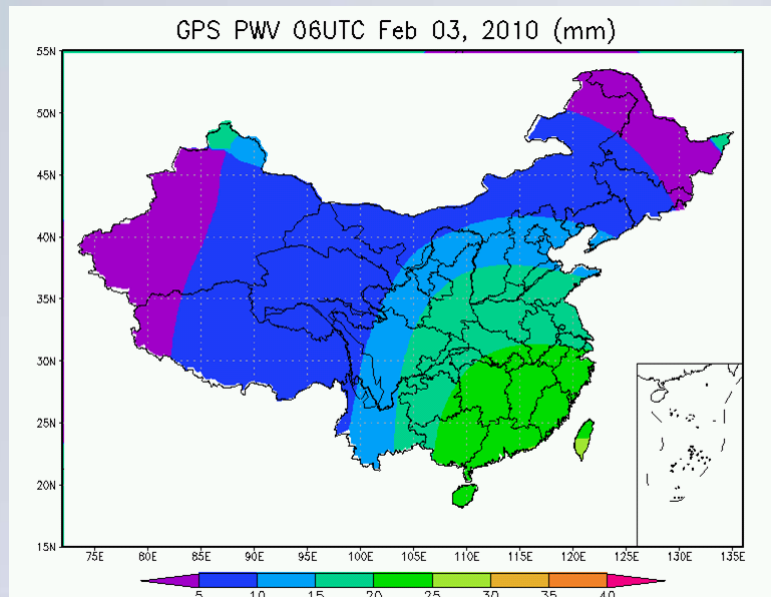
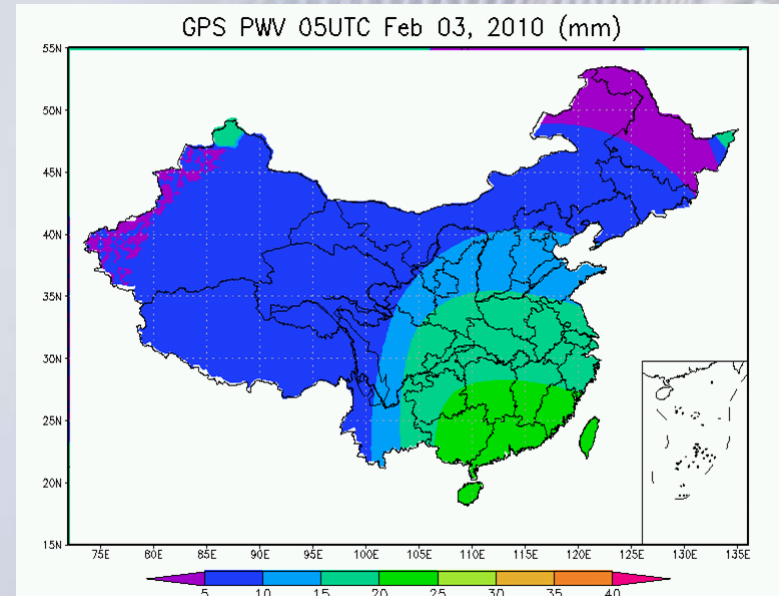
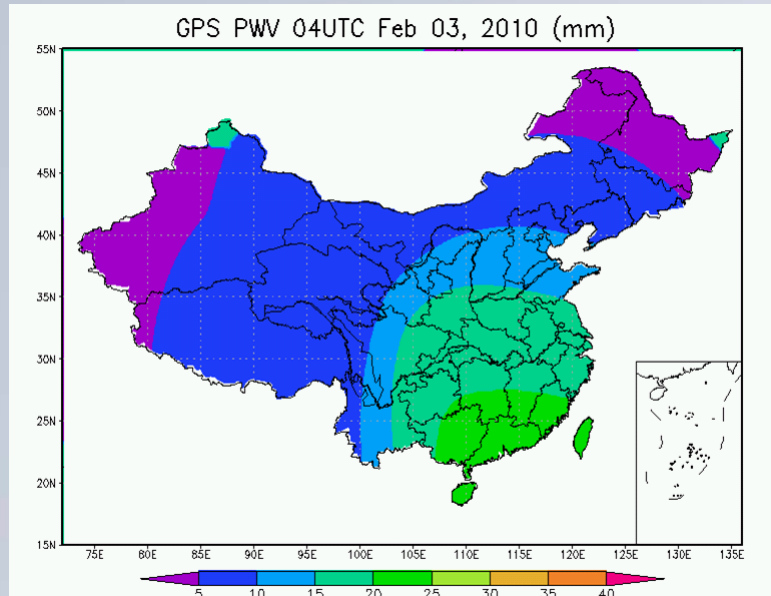
# Rain Episode on 5 Jul 2009







# Why GPS/PWV?



# Future Works

- **Implementation of GPS/PWV system in HK**
  - System to be set up towards end-Feb to provide real-time GPS/PWV data for forecasters
- **Integration of GPS/PWV in nowcasting of rainstorms**
  - Identification of PWV features in rainstorms
  - Data assimilation to NWP
- **Try to get PWV at various height using PPP and 3D tomography**
  - Exploring collaboration with PolyU, University of Calgary, Environment Canada

**Monitoring crustal movement  
in Hong Kong using GPS:  
preliminary results**

**Dickson Lau**

**Thank you**

