

TRAVERSE STATION SUMMARY

STATION NO. : 1008.02 (FORMER NO. : _____) CLASS : _____

LOCALITY : SHEK O PEAK SURVEY SHEET NO. : 15-NE- 9B

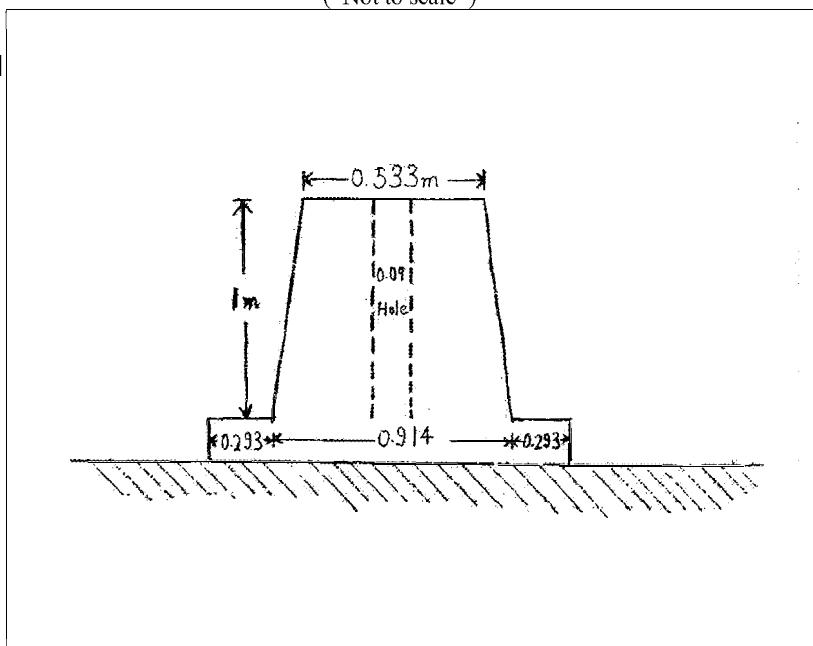
HK 80 DATUM	<p>HK 1980 GRID COORDINATES : N = <u>810 782.545</u> m , E = <u>843 160.019</u> m , Ht = _____ m ⁽¹⁾ (By Survey) Note (1): Height is above the HKPD and measured to the top of mark. LEVEL ACCURACY :</p>
WGS 84 DATUM	<p>GEOGRAPHICAL COORDINATES : Lat _____ , Long _____ , Ht = _____ m ⁽²⁾ (By Transformation) Note (2): Height is above the WGS 84 Ellipsoid and measured to the top of mark. GPS ACCURACY : REFERENCE FRAME :</p>

STATION SKETCH

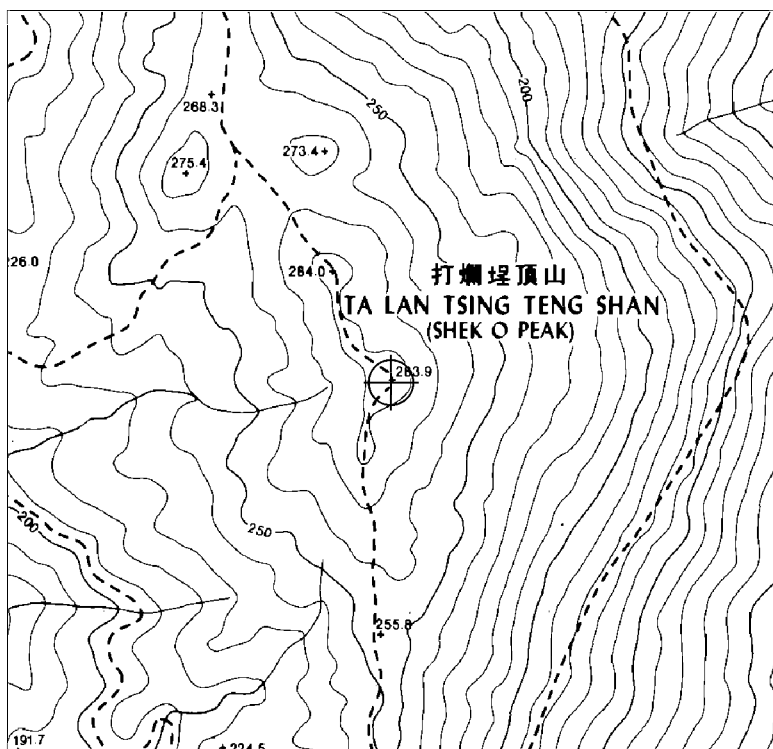
(Not to scale)

TYPE OF MARK:

OLD BEACON



LOCATION MAP



Scale : 1 / 5 000

Legend : = Station

REMARKS:

It requires 1/2 hr.
to travel from the
car park up to the
station on foot .