

TRAVERSE STATION SUMMARY

STATION NO. : 1107.01.1 (FORMER NO. : _____) CLASS : _____

LOCALITY : TAI O SURVEY SHEET NO. : 13-NW- 4A

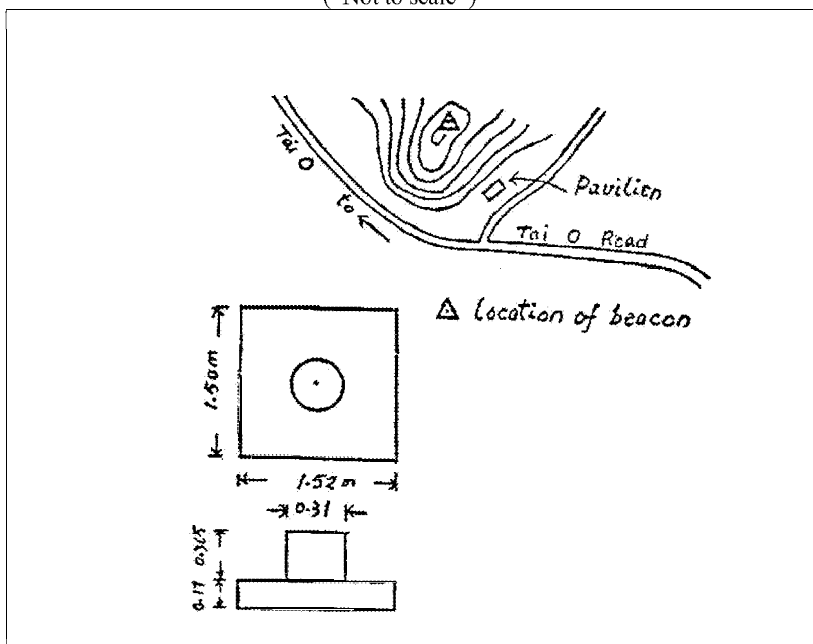
HK 80 DATUM	<p>HK 1980 GRID COORDINATES : N = <u>811 919.577</u> m , E = <u>805 092.843</u> m , Ht = _____ m ⁽¹⁾ (By Survey) Note (1): Height is above the HKPD and measured to the top of mark. LEVEL ACCURACY :</p>
WGS 84 DATUM	<p>GEOGRAPHICAL COORDINATES : Lat _____ , Long _____ , Ht = _____ m ⁽²⁾ (By Transformation) Note (2): Height is above the WGS 84 Ellipsoid and measured to the top of mark. GPS ACCURACY : REFERENCE FRAME :</p>

STATION SKETCH

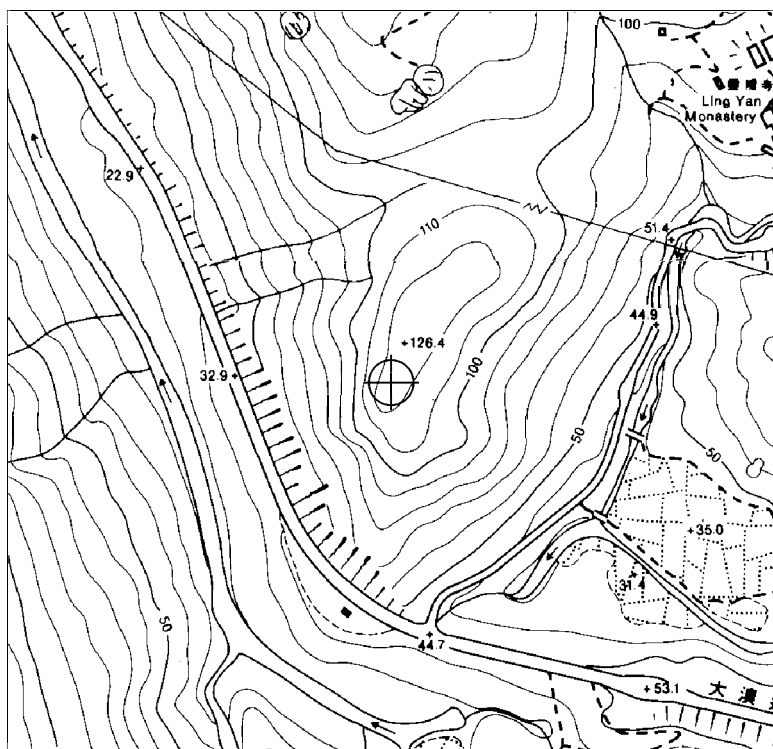
(Not to scale)

TYPE OF MARK:

BEACON B

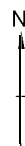


LOCATION MAP



Scale : 1 / 5 000

Legend : = Station



REMARKS:

As shown in the sketch, by the side of Tai O Road towards Tai O a Pavilion stands. Behind it, a path leading to the captioned beacon can be found. Walking time is about 15 minutes.