

# TRIGONOMETRICAL STATION SUMMARY

STATION NO. : **146** (FORMER NO. : **4019.02** )

SURVEY SHEET NO. : **11-NE-2D**

TRIG. NAME : **JAT'S INCLINE**

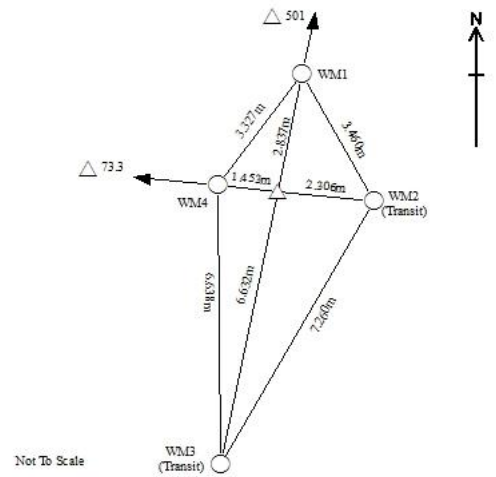
LOCALITY : **JAT'S INCLINE**

<b>HK 80 DATUM</b>	<p><b>HK 1980 GRID COORDINATES</b> : N = <b>822 967.354</b> m, E = <b>840 207.608</b> m, Class : <b>N.A.</b>                  Transformed from WGS84 (ITRF96) Ht = <b>271.1</b> m above HKPD and measured to the top of mark, Class : <b>N.A.</b></p> <p>SCALE FACTOR : <b>+ 0.2</b> ppm to measured distance to give Grid Distance</p> <p>GRID CONVERGENCE : <b>+ 00' 46.7"</b> to Grid Bearings to give Azimuth</p>
<b>WGS 84 DATUM</b>	<p><b>GEOGRAPHICAL COORDINATES</b> : Lat = <b>22° 20' 44.86275"</b> N, Long = <b>114° 12' 54.42899"</b> E, Class : <b>GH3</b>                  Ht = <b>268.501</b> m above Ellipsoid and measured to the top of mark, Class : <b>GV3</b></p> <p>Reference Frame = <b>ITRF96</b></p> <p><b>UTM GRID COORDINATES</b> : <b>2 473 754</b> mN, <b>213 164</b> mE</p> <p><b>UTM GRID REFERENCE</b> : <b>50Q KK 131 737</b></p>

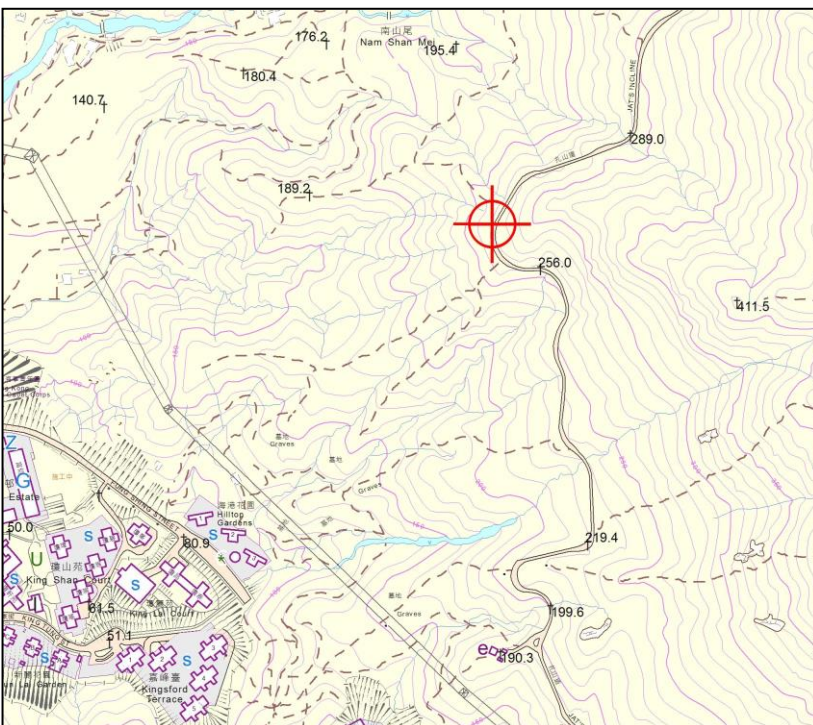
STATION PHOTO



REFERENCE MARKS DIAGRAM



LOCATION MAP (Scale 1:10000)



GRID BEARINGS TO ADJACENT TRIGS.

<b>73.3</b>	<b>275° 29' 57"</b>
<b>501</b>	<b>11° 49' 14"</b>

**REMARKS:**

Type of Mark :  
Type A Beacon

Drive along Shatin Pass Road and turn into Jat's Incline.