

# TRAVERSE STATION SUMMARY

STATION NO. : 4004.26 (FORMER NO. : \_\_\_\_\_)

ACCURACY CLASS : \_\_\_\_\_

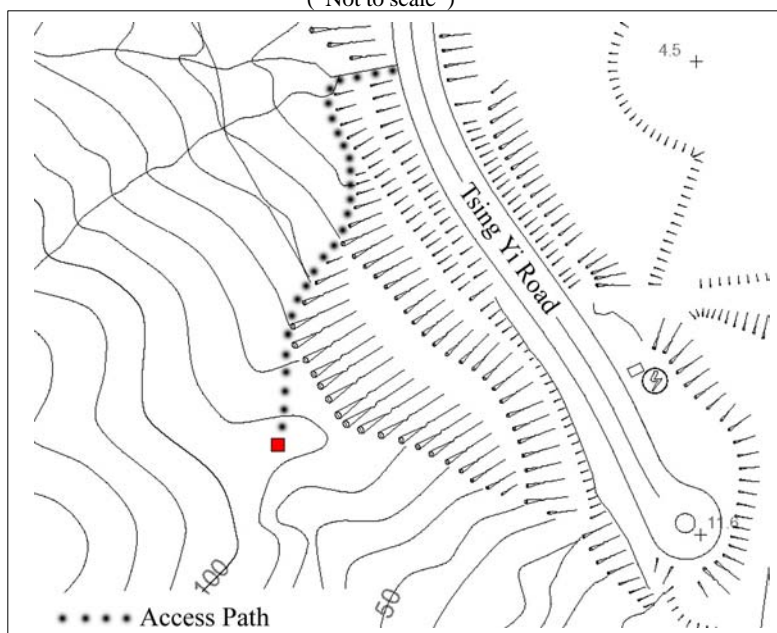
LOCALITY : Tsing Yi

SURVEY SHEET NO. : 10-NE-10C

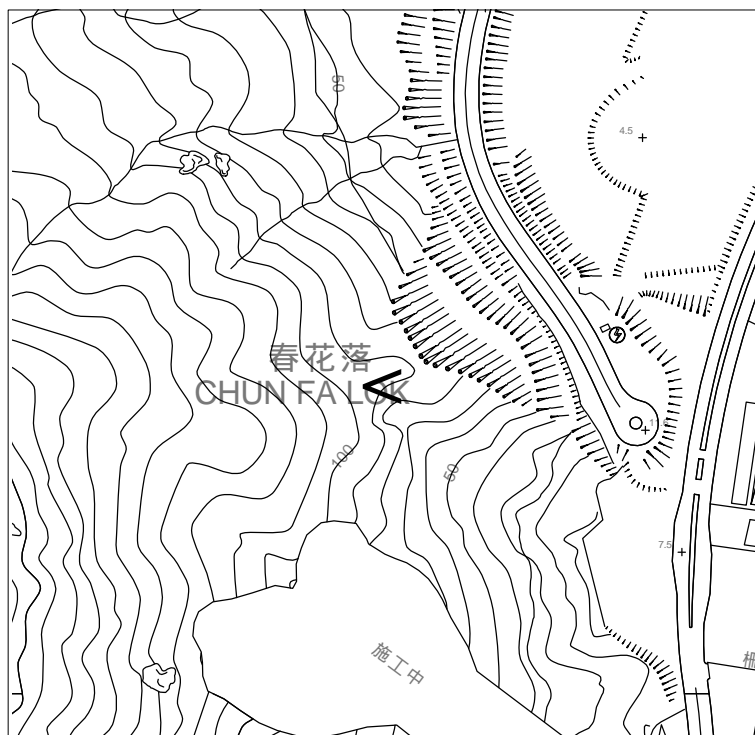
<b>HK 80 DATUM</b>	<b>HK 1980 GRID COORDINATES</b> : N = <u>821 961.095</u> m, E = <u>828 976.413</u> m, Ht = _____ m <sup>(1)</sup> Note (1): Height is above the HKPD and measured to the top of mark. <b>LEVEL ACCURACY</b> : _____
<b>WGS 84 DATUM</b>	<b>GEOGRAPHICAL COORDINATES</b> : Lat _____, Long _____, Ht = _____ m <sup>(2)</sup> Note (2): Height is above the WGS 84 Ellipsoid and measured to the top of mark. <b>GPS ACCURACY</b> : _____ <b>REFERENCE FRAME</b> : _____

**STATION SKETCH**  
( Not to scale )

TYPE OF MARK:  
TYPE A BEACON



**LOCATION MAP**



Scale : 1:5000

Legend : = Station

**REMARKS:**

The HK 1980 grid coordinates of this station are transformed from GPS surveyed geodetic coordinates.

Access to this station is restricted until adjoining construction work is completed.