

TRAVERSE STATION SUMMARY

STATION NO. : **4008.06** (FORMER NO. : _____)

LOCALITY : **DUCKLING HILL**

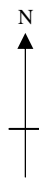
SURVEY SHEET NO. : **12-NW-11C**

HK 80 DATUM	HK 1980 GRID COORDINATES : N = <u>820 504.757</u> m, E = <u>845 209.993</u> m, Class : <u>N.A.</u> Transformed from WGS84 (ITRF96) Ht = <u>152.645</u> m above HKPD and measured to the top of mark, Class : <u>V3</u>	
WGS 84 DATUM	GEOGRAPHICAL COORDINATES : Lat = <u>22° 19' 24.73599"</u> N, Long = <u>114° 15' 49.20313"</u> E, Class : <u>GH4</u> Ht = <u>150.296</u> m above Ellipsoid and measured to the top of mark, Class : <u>GV4</u> Reference Frame = <u>ITRF96</u>	

STATION PHOTO



LOCATION MAP (Scale 1:20000)



REMARKS:

Type of Mark :
Type A Beacon

It takes about 15 minutes walking from the end of road to station along the footpath.