

TRAVERSE STATION SUMMARY

STATION NO. : 7004.01 (FORMER NO. : TV169.01)

CLASS : _____

LOCALITY : Tit Hang

SURVEY SHEET NO. : 2-SE-4A

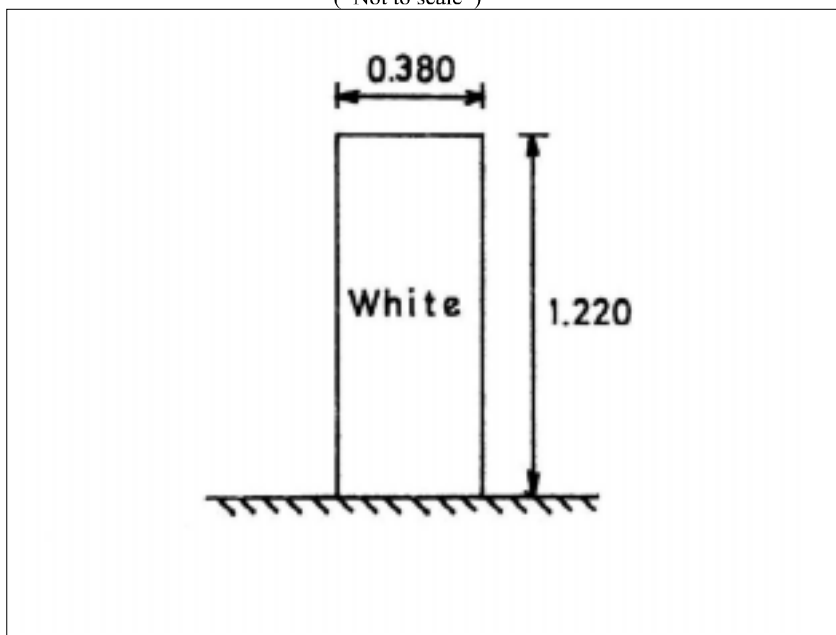
<i>HK 80 DATUM</i>	<p><i>HK 1980 GRID COORDINATES</i> : N = <u>841 867.876</u> m , E = <u>827 449.329</u> m , Ht = <u>143.8</u>m (1)</p> <p>(By Survey) : Note (1) : Height is above the HKPD and measured to the top of mark.</p> <p style="text-align: center;"><i>LEVEL ACCURACY</i> :</p>
<i>WGS 84 DATUM</i>	<p><i>GEOGRAPHICAL COORDINATES</i> : Lat _____ , Long _____ , Ht = _____ m (2)</p> <p>(By Transformation) : Note (2) : Height is above the WGS 84 Ellipsoid and measured to the top of mark.</p> <p style="text-align: center;"><i>GPS ACCURACY</i> : <i>REFERENCE FRAME</i> :</p>

STATION SKETCH

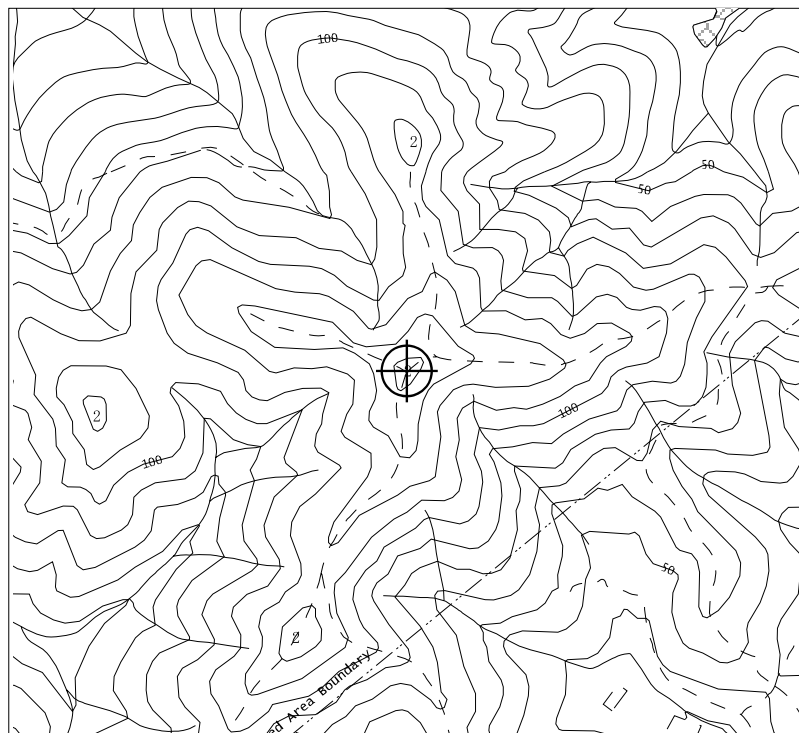
(Not to scale)

TYPE OF MARK:

BEACON A



LOCATION MAP



Scale : 1 / 5 000

Legend : = Station

REMARKS:

PROPOSED RESERVED
SITE ON 1.6.96

Prepared by : GEOD/NT

Checked by : GEOD/NT

Approved by : GEOD/NT
Date : 31/12/1998

Geodetic Survey Section
SMO, Lands Department
Copyright reserved