

TRAVERSE STATION SUMMARY

STATION NO. : **7011.01** (FORMER NO. : **TV184.01**)

LOCALITY : **FUNG KONG TSUEN (KAI PAK LING)**

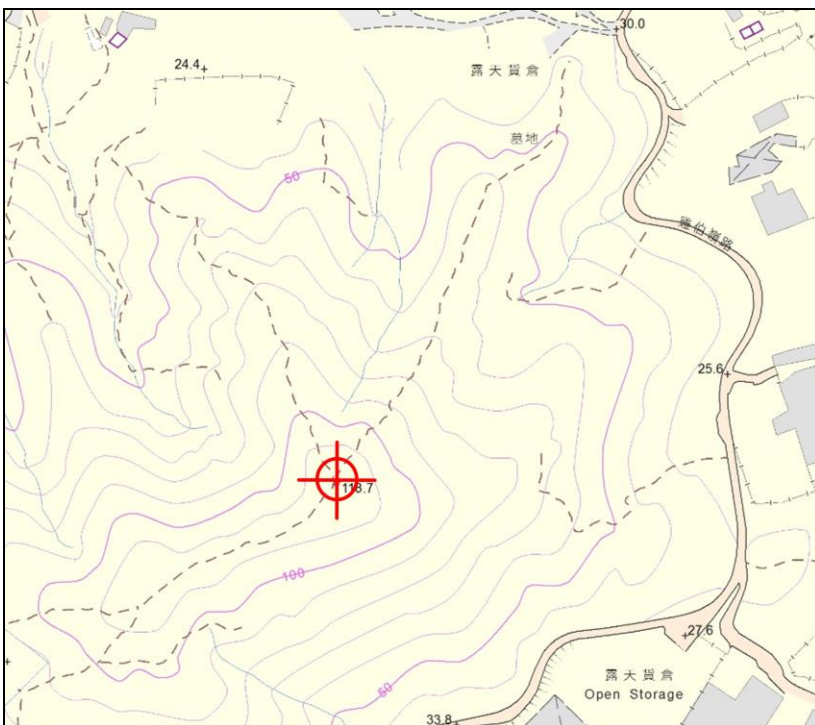
SURVEY SHEET NO. : **6-NW-1D**

HK 80 DATUM	HK 1980 GRID COORDINATES : N = 835 122.498 m, E = 816 127.221 m, Class : H3 Ht = 120.4 m above HKPD and measured to the top of mark, Class : V6
WGS 84 DATUM	GEOGRAPHICAL COORDINATES : Lat = _____ N, Long = _____ E, Class : _____ Ht = _____ m above Ellipsoid and measured to the top of mark, Class : _____ Reference Frame = _____

STATION PHOTO



LOCATION MAP (Scale 1:5000)



REMARKS:

Type of Mark :

Type A Beacon

Prepared by: **GEODETIC**

Checked by: **GEODETIC**

Approved by: **GEODETIC**

Date: **16/09/2024**

Geodetic Survey Section
SMO, Lands Department
© Copyright Reserved