

TRAVERSE STATION SUMMARY

STATION NO. : **7027.02** (FORMER NO. : **TV197.02**)

LOCALITY : **TUNG FUNG AU, TA KWU LING**

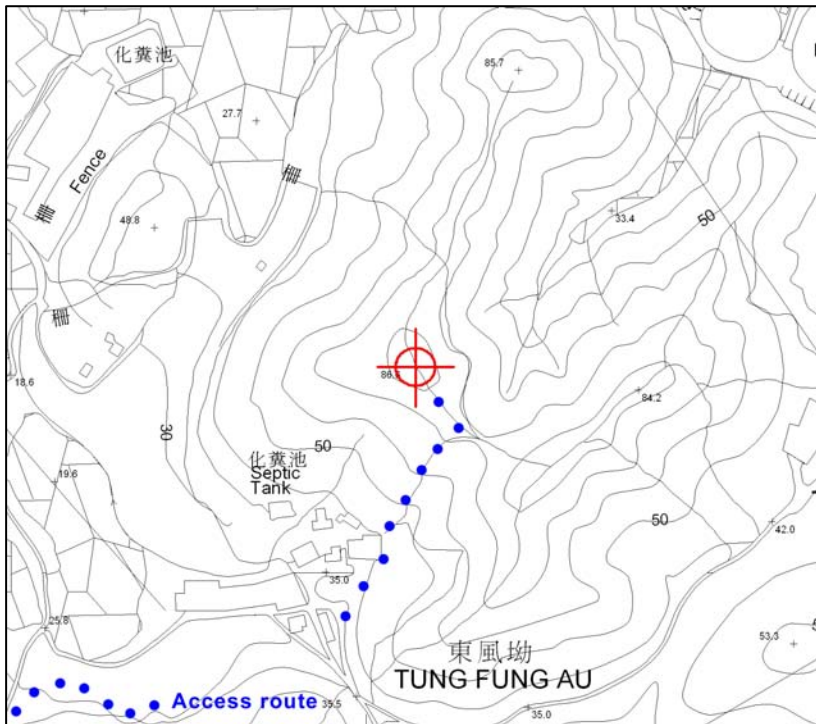
SURVEY SHEET NO. : **3-NW-14C**

HK 80 DATUM	HK 1980 GRID COORDINATES : N = 844 948.523 m, E = 834 629.746 m, Class : H3 Ht = 87.2 m above HKPD and measured to the top of mark, Class : V5	
WGS 84 DATUM	GEOGRAPHICAL COORDINATES : Lat = _____ N, Long = _____ E, Class : _____ Ht = _____ m above Ellipsoid and measured to the top of mark, Class : _____ Reference Frame = _____	

STATION PHOTO



LOCATION MAP (Scale 1:5000)



REMARKS:

Type of Mark :
Type B Beacon (CP)

All measurements shown are in horizontal distance unless otherwise specified.

Prepared by : **CHOI T K**

Checked by : **LI F K**

Approved by : **CHENG W C, LS/G(NT)**

Date : **29/07/2011**

Geodetic Survey Section
 SMO, Lands Department
 © Copyright Reserved