

TRAVERSE STATION SUMMARY

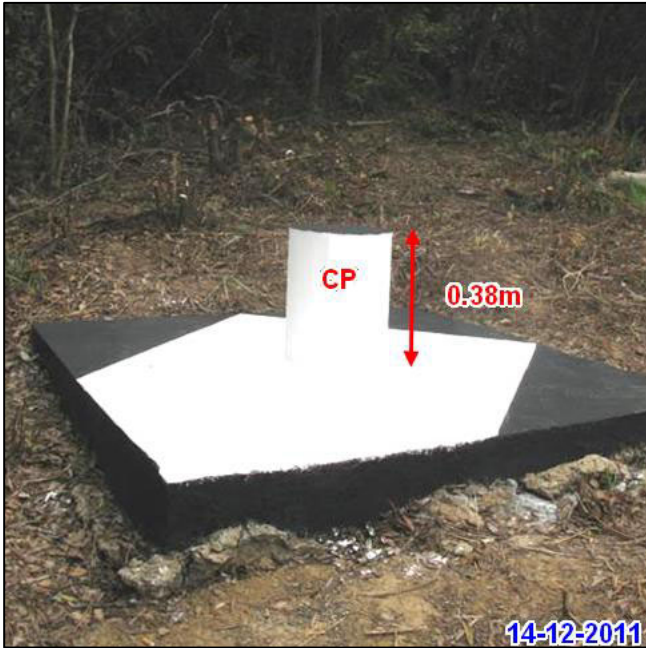
STATION NO. : **7033.05** (FORMER NO. : _____)

LOCALITY : **SAN KWAI TIN, NORTH**

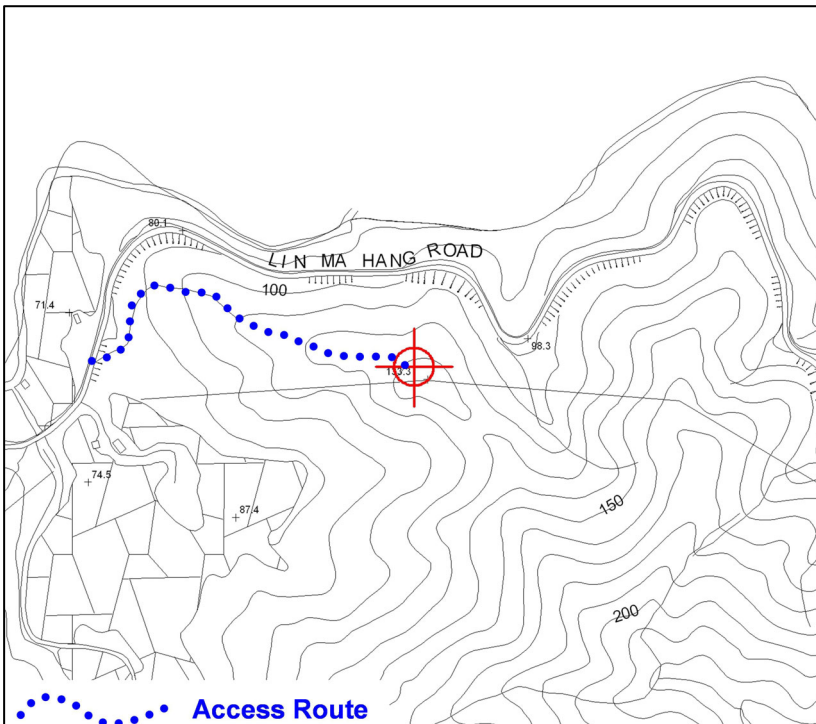
SURVEY SHEET NO. : **3-NE-6B**

HK 80 DATUM	HK 1980 GRID COORDINATES : N = 846 224.045 m, E = 838 488.157 m, Class : H3 Ht = 131.4 m above HKPD and measured to the top of mark, Class : V5	
WGS 84 DATUM	GEOGRAPHICAL COORDINATES : Lat = _____ N, Long = _____ E, Class : _____ Ht = _____ m above Ellipsoid and measured to the top of mark, Class : _____ Reference Frame = _____	

STATION PHOTO



LOCATION MAP (Scale 1:5000)



REMARKS:

Type of Mark :
Type B Beacon (CP)

Ask for key to gate 23 from Sha Tau Kok Police Station. Walking about 1/2 hour.

All measurements shown are in horizontal distance unless otherwise specified.